

PREFACE

The census of Nagaland Government Employees is being published by the Directorate annually, since 1964. The present publication contain details about the Government Employees in the state as on 31st March 2011 according to their status, tenure, sex, religion and pay range etc. The present census cover all the employees, whether permanent, temporary, work charged or contract.

The Department of Economics & Statistics is grateful to all the Government Departments for providing the required information for bringing out this publication. I would like to place on record, my deep appreciation for the strenuous efforts put by my officers and staff of the Directorate for the success of this publication.

I hope, this publication would be useful for the policy makers, planners, research Scholars and public in general who are interested in the employment issues of the state.

Place : Kohima

Dated: 23-05-2013

Sd/-
(Y.SACHEO OVUNG)
Director & H.OD
Economics & Statistics
Nagaland : Kohima

CONTENTS

1. List of Tables.
2. Findings of the Census.
 - 2.1. Number of Employees in different Grades.
 - 2.2. Growth of Employment during the years 1964 to 2011.
 - 2.3. Male and Female Employees.
 - 2.4. Number of Employees by Religion.
 - 2.5. Schedule Tribe and other Employees.
 - 2.6. Distribution of Employees by Basic Pay.
 - 2.7. Distribution of Employees according to Range of Emoluments.
 - 2.8. Distribution of Employees according to status and Naga/Non-Naga.
 - 2.9. Distribution of Employees according to status & Age.
 - 2.10. Distribution of Employees according to status in different Deptts.
 - 2.11. District-wise distribution of Employees according to status & department.
 - 2.12. Distribution of Employees according to status with Educational Qualification.
 - 2.13. Distribution of Employees according to status with Plan and Non-Plan Posts.
 - 2.14. District wise distribution of Employees.

LIST OF TABLES

- I. Distribution of Government employees according to Status and Tenure of Service.
- II. Distribution of Government employees according to Status and number of increase from 1964-2011.
- III. Distribution of Government employees according to Status and Sex.
- IV. Distribution of Government employees according to Status and Religion.
- V. Distribution of Government employees according to Status, Tribe etc.
- VI. Distribution of Government employees according to status and their Basic Pay Ranges.
- VI. Distribution of Government employees according to Status and Monthly Emolument Ranges (i.e. Basic pay plus all other allowances).
- VIII. Distribution of Government employees according to status and Naga/Non-Naga.
- IX. Distribution of Government employees by Status and Age.
- X. Distribution of Government employees by status and Department.
- XI. District-wise distribution of Government employees according to status & Department.
- XII. Distribution of Government employees according to status with Educational Qualification.
- XIII. Distribution of Government employees according to status with Plan/Non-Plan Posts.
- XIV. District-wise distribution of employees.

KEY FINDINGS OF THE CENSUS

TABLE-I

2.1. Number of employees in different grades.

The total number of Government employees as on 31.3.2011 in the various Departments were reported to be 91308 which is 4.61 % of the total provisional population of the state. Out of these, Class-I comprised of 3707, Class-II 2401, Class-III 61264 and Class-IV 23936. Class-IV employees constitutes 26.21 % of the total Government employees

TABLE-II

2.2. Growth of employees during 2010 to 2011.

The total strength of the employees increased to 91308 in 2011 from 90519 in 2010 indicating 0.86 % (789) rise in employment level of the state over a period of one year.

TABLE-III

2.3. Male and Female employees

It can be observed from table III that the level of male and female employment in the state is highly inproportionate. For instance, Class-I male employees was 78.53 % whereas female was only 21.47% , Class-II male employees was 82.26% while female employees was 17.74 % and the vast gap can be seen in other classes of service as well. Another important observation was that the larger proportions of female employees were engaged in class-III service (14110) which covered 23.03 % of total female employees in the state. Female Employment in Class-I, Class-II and Class-IV services were 21.47 % , 17.74 % and 18 % respectively.

TABLE-IV

2.4. Number of employees by religion.

This table shows that Christians constituted 93.16 % of the total employees with 6.23 % Hindus 0.12 % , Muslims and 0.49 % belonging to other religion during the reference year.

TABLE-V

2.5. Scheduled Tribe and other employees.

There are as many as 84996 Scheduled Tribe employees in the state constituting 93.09 % of the total number of employees. The percentage share of Scheduled Tribe employees in Class-I, Class-II, Class-III and Class-IV service were 93.47 % , 94.17 % , 94.59 % , 89.06 % respectively in the respective Cadres of services.

TABLE-VI

2.6. Distribution of employees by basic pay.

The different classes of employees are distributed into 12 (twelve) basic pay groups. It is observed that 24.63 % of the employees during this year received basic pay less than Rs.4400 Per month. Of the remaining 75.05 % received basic pay less than Rs.34000 per month and the remaining 0.32 % received basic pay of Rs.34000 and above.

TABLE-VII

2.7. Distribution of employees according to range of emoluments (basic pay plus all other allowances).

Information on total emoluments which includes basic pay, inner line compensatory allowance, dearness allowance, and house rent allowance were collected and analysed in this table. It is observed that 59.25 % of the total employees fell in the group of those whose total monthly emoluments were less than Rs.16,000 /- per month 40.42 % fell in group between Rs.16,000 to 59,999 /- per month and 0.33 % got emoluments between Rs.60,000 and above per month.

TABLE-VIII

2.8. Distribution of employees according to status and Naga / Non-Naga.

Naga employees constituted 92.78 % of the total employees and the remaining 7.22 % were Non-Naga.

TABLE-IX

2.9. Distribution of employees according to status with age groups.

In this table, the data on age-wise distribution of various categories of employees is presented. Age of employees were collected in completed years as on 31.3.2011 but due to non reporting, it was not possible to get the age particulars of 15455 (16.92 %) employees. The available data indicates that the maximum number of employees (24853) were under the age group of 36-45 years, which was 27.22 % of the total employees in the state. The least number of employees were in the age group of 56-60 which covered only 2.48 % of the total employees.

TABLE-X

2.10. Distribution of employees according to status in different departments.

In this table, 64 departments have been listed with the number of employees in each respective department. It can be observed from the table that the Police Department have the highest number of employees (25633) capturing 28.07 % of the total employees followed by Education Department with employment percentage of 16.72 %. Science and Technology department had the least employees with mere 25 personnel only.

TABLE-XI (A TO K)

2.11. District-wise of employees according to status & department.

The tables shows the number of departments set up in the 11 districts of Nagaland. Kohima had 63 departments with 23683 employees which was the highest amongst the districts while longleng had the least number of departments numbering to 21 departments.

TABLE-XII

2.12. Distribution of employees according to status & educational qualification.

The table indicates that 53.11 % (max) number of employees in the state were Under Matric with 48.77 % of them falling under class III status. Another 2.78 % of the employees were illiterate with 8.71 % of them serving in Class IV service. However there were no illiterate personnel in the Class I and Class II status.

TABLE-XIII

2.13. Distribution of employees according to status with Plan / Non-Plan post.

This table show that 89.21 % of the post were Non-Plan and 10.79 % were Plan Post.

TABLE-XIV

2.14. District-wise Distribution of employees.

It can be observed from the table that Kohima District has the highest number of employees (due to the location of Civil Secretariat and offices of the head of departments) numbering upto 23683 which means that 25.93 % are employed in Kohima.

Kiphire District had the lowest level of employment with 1925 (2.11 %) employees in the district.

TABLE-I**DISTRIBUTION OF GOVERNMENT EMPLOYEES ACCORDING TO STATUS AND TENURE OF SERVICE AS ON 31ST MARCH, 2011.**

<i>Status</i>	TENURE OF SERVICE					
		<i>Permanent</i>	<i>Temporary</i>	<i>Contract & Deputation</i>	<i>Work Charge & Adhoc</i>	<i>Total</i>
1	2	3	4	5	6	7
<i>Class-I</i>	N.O	2162	1391	110	44	3707
	P.C	58.32	37.52	2.97	1.19	100.00
<i>Class-II</i>	N.O	1030	1239	80	52	2401
	P.C	42.90	51.60	3.33	2.17	100.00
<i>Class-III</i>	N.O	31431	24502	1668	3663	61264
	P.C	51.30	39.99	2.72	5.98	100.00
<i>Class-IV</i>	N.O	5958	11150	556	6272	23936
	P.C	24.89	46.58	2.32	26.20	100.00
Total	N.O	40581	38282	2414	10031	91308
	P.C	44.44	41.93	2.64	10.99	100.00

TABLE-II (A)
DISTRIBUTION OF GOVERNMENT EMPLOYEES ACCORDING TO
STATUS AND NUMBERS FROM 1964-1971

<i>years</i>	<i>Class-I & II</i>	<i>Class-III</i>	<i>Class-IV</i>	<i>Total</i>
1964	287	5395	2629	8311
1965	360	6674	4272	11306
1966	449	7465	5057	12971
1967	475	8105	6866	15446
1968	572	9372	8655	18599
1969	634	10993	10300	21927
1970	682	11223	11341	23246
1971	704	12116	13414	26234

TABLE-II (B)
DISTRIBUTION OF GOVERNMENT EMPLOYEES ACCORDING TO
STATUS AND NUMBERS FROM 1988-2011

<i>Years</i>	<i>Class-I</i>	<i>Class-II</i>	<i>Class-III</i>	<i>Class-IV</i>	<i>Total</i>
1988	1381	1021	27904	23221	53527
1989	1538	969	28634	24434	55575
1990	1763	818	29447	24815	56843
1991	1883	773	30185	25108	57949
1992	1941	777	30779	25417	58914
1993	1977	779	31061	25650	59467
1994	2109	729	31435	26049	60322
1995	2341	851	32485	26535	62212
1996	2410	1000	33621	27413	64444
1997	2591	916	33399	27611	64517
1998	2948	1502	38598	27840	70888
1999	3028	1540	39892	28169	72629
2000	3058	1545	42318	26452	73373
2001	3059	1589	42440	26360	73448
2002	3059	1698	50968	17751	73476
2003	3064	1697	50988	17734	73483
2004	3109	1883	52007	17341	74340
2005	3162	1929	54723	17838	77652
2006	3363	1976	56888	20107	82334
2007	3426	2120	56305	21547	83398
2008	3558	2371	58002	22604	86535
2009	3561	2400	59044	22536	87541
2010	3632	2380	60843	23664	90519
2011	3707	2401	61264	23936	91308

GROWTH RATE OF EMPLOYMENT DURING 1964-2010

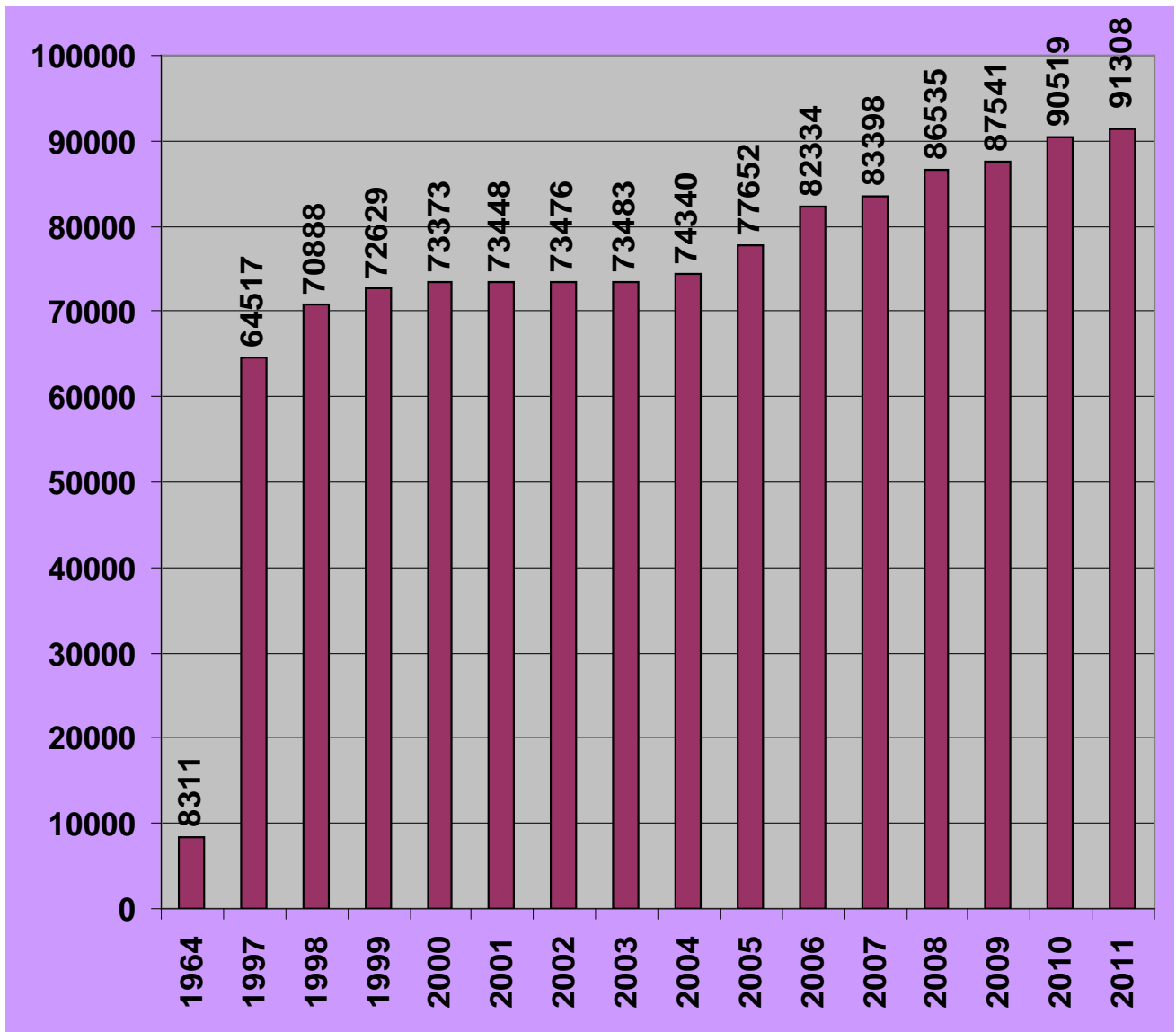


TABLE-III

**DISTRIBUTION OF GOVERNMENT EMPLOYEES ACCORDING
TO STATUS AND SEX AS ON 31ST MARCH, 2011.**

1	SEX			
	2	Male	Female	Total
Class-I	N.O	2911	796	3707
	P.C	78.53	21.47	100.00
Class-II	N.O	1975	426	2401
	P.C	82.26	17.74	100.00
Class-III	N.O	47154	14110	61264
	P.C	76.97	23.03	100.00
Class-IV	N.O	19626	4310	23936
	P.C	82	18	100.00
Total	N.O	71666	19642	91308
	P.C	78.49	21.51	100.00

TABLE-IV

**DISTRIBUTION OF GOVERNMENT EMPLOYEES ACCORDING TO STATUS AND RELIGION
AS ON 31ST MARCH, 2011.**

Status	RELIGION									
	Christian		Hindu		Muslim		Others		Total	
	Number	P.C	Number	P.C	Number	P.C	Number	P.C	Number	P.C
1	2	3	4	5	6	7	8	9	10	11
Class-I	3468	93.55	213	5.75	10	0.27	16	0.43	3707	100.00
Class-II	2270	94.54	118	4.92	2	0.08	11	0.46	2401	100.00
Class-III	58020	94.70	2972	4.85	42	0.07	230	0.38	61264	100.00
Class-IV	21300	88.99	2388	9.98	61	0.25	187	0.78	23936	100.00
Total	85058	93.16	5691	6.23	115	0.12	444	0.49	91308	100.00

TABLE-V**DISTRIBUTION OF GOVERNMENT EMPLOYEES ACCORDING TO STATUS, SCHEDULED TRIBE & OTHERS AS ON 31ST MARCH, 2011.**

Status	Schedule Tribe		Others		Total	
	Number	P.C	Number	P.C	Number	P.C
1	2	3	4	5	6	7
Class-I	3465	93.47	242	6.53	3707	100.00
Class-II	2261	94.17	140	5.83	2401	100.00
Class-III	57952	94.59	3312	5.41	61264	100.00
Class-IV	21318	89.06	2618	10.94	23936	100.00
Total	84996	93.09	6312	6.91	91308	100.00

TABLE-VI**DISTRIBUTION OF GOVERNMENT EMPLOYEES ACCORDING TO STATUS AND BASIC PAY RANGES AS ON 31ST MARCH, 2011**

Basic Pay Ranges (Rs.)	STATUS									
	Class-I		Class-II		Class-III		Class-IV		Total	
	Number	P.C	Number	P.C	Number	P.C	Number	P.C	Number	P.C
1	2	3	4	5	6	7	8	9	10	11
Below 4400			19	0.79	9436	15.4	13033	54.45	22488	24.63
4400 – 9999	408	11.01	864	35.99	38305	62.53	9851	41.15	49428	54.13
10000 – 15999	1071	28.89	638	26.57	12772	20.85	1014	4.24	15495	16.97
16000 – 21999	894	24.12	692	28.82	665	1.09	38	0.16	2289	2.51
22000 – 27999	760	20.5	151	6.29	81	0.13			992	1.09
28000 – 33999	287	7.74	34	1.42	2				323	0.35
34000 – 39999	135	3.64	3	0.12	3				141	0.16
40000 – 45999	86	2.32							86	0.09
46000 – 51999	57	1.54							57	0.06
52000 – 59999	7	0.19							7	0.01
60000 and above	2	0.05							2	
Total	3707	100.00	2401	100.00	61264	100.00	23936	100.00	91308	100.00

TABLE-VII**DISTRIBUTION OF GOVERNMENT EMPLOYEES ACCORDING TO MONTHLY EMOLUMENT RANGES
(BASIC PAY RANGES PLUS ALL OTHER ALLOWANCES) AS ON 31ST MARCH, 2011**

Basic Pay Ranges (Rs.)	STATUS									
	Class-I		Class-II		Class-III		Class-IV		Total	
	Number	P.C	Number	P.C	Number	P.C	Number	P.C	Number	P.C
1	2	3	4	5	6	7	8	9	10	11
<i>Below 4400</i>					933	1.52	4831	20.18	5764	6.31
<i>4400 – 9999</i>			5	0.21	5380	8.78	6876	28.73	12261	13.43
<i>10000 – 15999</i>	59	1.59	138	5.75	25258	41.23	10624	44.39	36079	39.51
<i>16000 – 21999</i>	142	3.83	608	25.32	20890	34.1	1508	6.3	23148	25.35
<i>22000 – 27999</i>	493	13.30	537	22.36	7953	12.98	88	0.37	9071	9.93
<i>28000 – 33999</i>	508	13.7	604	25.16	777	1.27	6	0.02	1895	2.08
<i>34000 – 39999</i>	589	15.89	404	16.83	57	0.09	3	0.01	1053	1.15
<i>40000 – 45999</i>	1078	29.08	48	2	11	0.02			1137	1.25
<i>46000 – 51999</i>	332	8.96	45	1.87	5	0.01			382	0.42
<i>52000 – 59999</i>	211	5.69	10	0.42					221	0.24
<i>60000 and above</i>	295	7.96	2	0.08					297	0.33
Total	3707	100.00	2401	100.00	61264	100.00	23936	100.00	91308	100.00

TABLE-VIII**DISTRIBUTION OF GOVERNMENT EMPLOYEES ACCORDING TO STATUS AND NAGA / NON-NAGA AS ON 31ST MARCH, 2011.**

Status	Naga		Non-Naga		Total	
	Number	P.C	Number	P.C	Number	P.C
1	2	3	4	5	6	7
<i>Class-I</i>	3434	92.64	273	7.36	3707	100.00
<i>Class-II</i>	2273	94.67	128	5.33	2401	100.00
<i>Class-III</i>	57997	94.67	3267	5.33	61264	100.00
<i>Class-IV</i>	21013	87.79	2923	12.21	23936	100.00
Total	84717	92.78	6591	7.22	91308	100.00

DISTRIBUTION OF GOVERNMENT EMPLOYEES, ACCORDING TO STATUS AND NAGA/NON-NAGA AS ON 31-3-2011

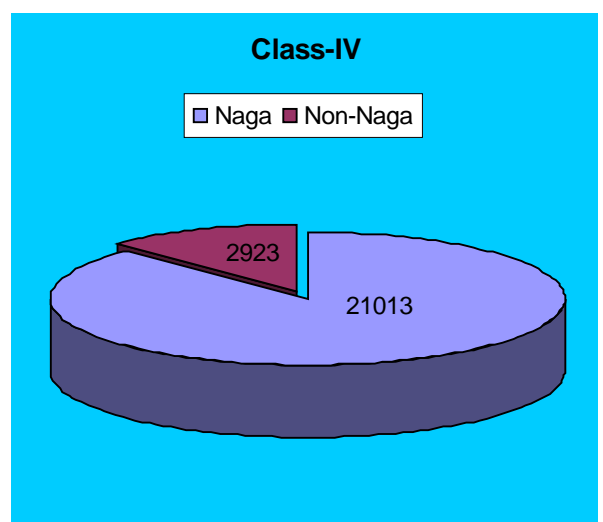
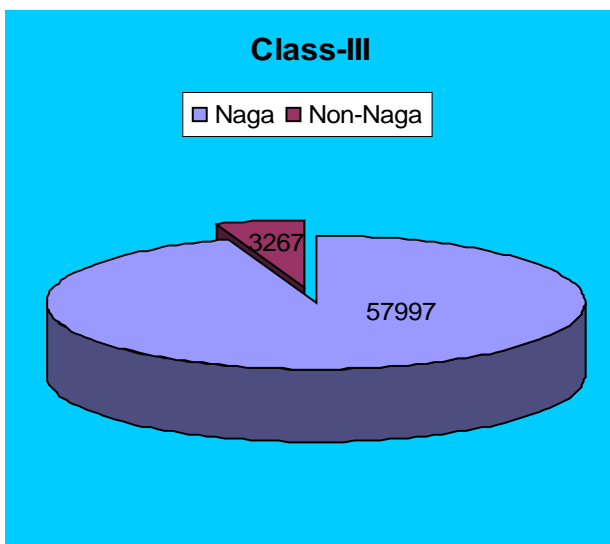
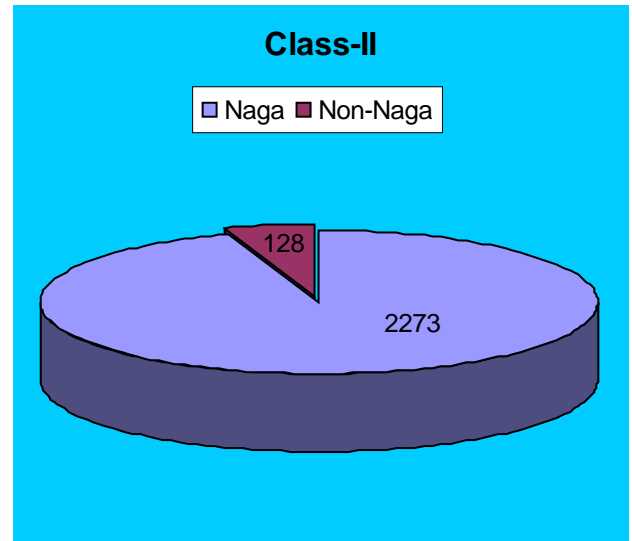
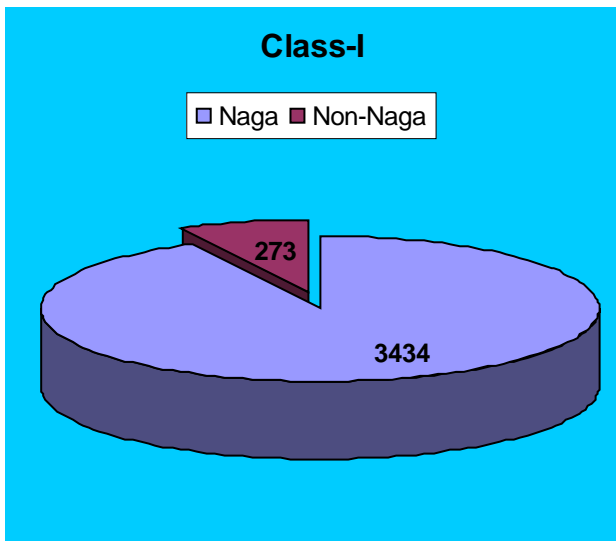


TABLE – IX

DISTRIBUTION OF GOVERNMENT EMPLOYEES ACCORDING TO STATUS AND AGE
AS ON 31ST MARCH, 2011

Age Group	STATUS									
	Class-I		Class-II		Class-III		Class-IV		Total	
	Number	P.C	Number	P.C	Number	P.C	Number	P.C	Number	P.C
1	2	3	4	5	6	7	8	9	10	11
Upto 25	27	0.73	27	1.12	6127	10	1571	6.56	7752	8.49
26 to 35	491	13.25	311	12.95	17335	28.30	5692	23.78	23829	26.10
36 to 45	975	26.30	720	29.99	16961	27.68	6197	25.89	24853	27.22
46 to 55	1205	32.50	770	32.07	11141	18.19	4040	16.88	17156	18.79
56 to 60	292	7.88	159	6.63	1265	2.06	547	2.29	2263	2.48
Not Reported	717	19.34	414	17.24	8435	13.77	5889	24.60	15455	16.92
Total	3707	100.00	2401	100.00	61264	100.00	23936	100.00	91308	100.00

DISTRIBUTION OF GOVERNMENT EMPLOYEES BY
STATUS AND AGE AS ON 31-3-2011

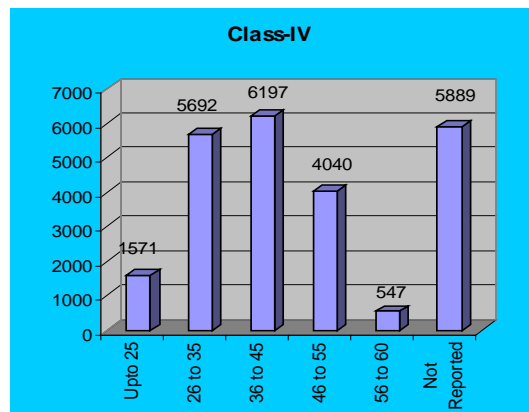
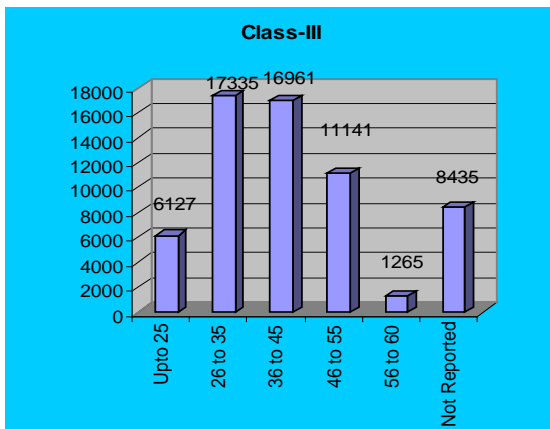
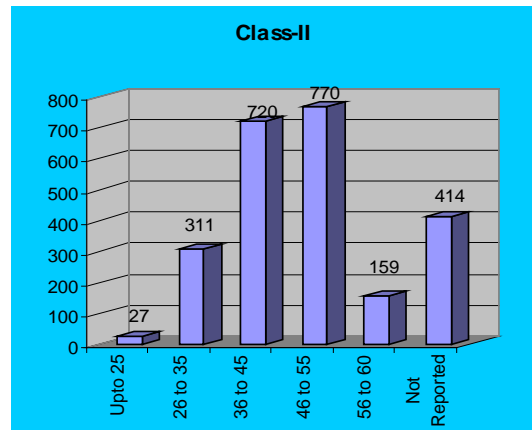
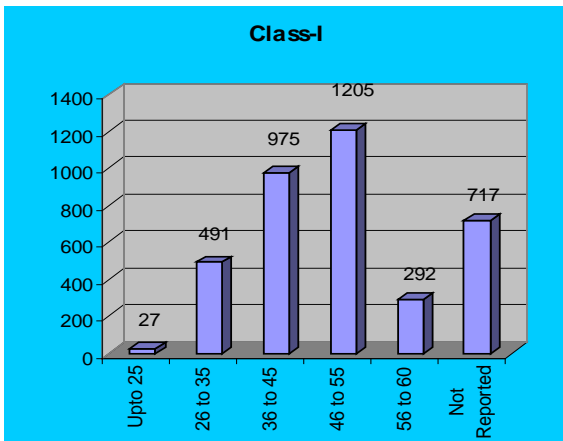


TABLE-X**DISTRIBUTION OF GOVERNMENT EMPLOYEES BY STATUS AND DEPARTMENT AS ON 31ST MARCH, 2011.**

Sl.No.	Department	Class-I	Class-II	Class-III	Class-IV	Total	Rank
1	2	3	4	5	6	7	8
1.	<i>Administrative Training Institute</i>	13		26	22	61	58
2.	<i>Agriculture</i>	106	104	780	357	1347	11
3.	<i>Animal Husbandry & Veterinary</i>	164	19	630	726	1539	10
4.	<i>Art and Culture</i>	14	22	106	76	218	41
5.	<i>Assembly Secretariat</i>	37	12	99	66	214	42
6.	<i>Civil Secretariat</i>	279	101	1260	731	2371	8
7.	<i>Co-operation</i>	14	8	181	62	265	40
8.	<i>Economics & Statistics</i>	16	38	474	76	604	21
9.	<i>Election</i>	10	20	75	43	148	48
10.	<i>Electricity</i>	94	152	1469	1329	3044	7
11.	<i>Employment & Craftsman Training</i>	21	21	243	117	402	28
12.	<i>Evaluation</i>	7	10	63	23	103	52
13.	<i>Excise</i>	16	38	342	36	432	27
14.	<i>Fire Service</i>	2	6	47	270	325	35
15.	<i>Fisheries</i>	14	19	188	87	308	37
16.	<i>Forest</i>	51	85	882	183	1201	13
17.	<i>General Administration</i>	170	32	2317	2095	4614	5
18.	<i>Geology & Mining</i>	53	23	178	111	365	30
19.	<i>Governor's Secretariat</i>	10	1	22	33	66	57
20.	<i>Health & Family Welfare</i>	428	52	3468	2875	6823	3
21.	<i>Higher Education</i>	493	15	228	320	1056	15
22.	<i>Technical Education</i>	47	3	78	78	206	43
23.	<i>Home Guards</i>	14	11	163	148	336	32
24.	<i>Horticulture</i>	30	25	174	253	482	25
25.	<i>Industries</i>	105	66	687	347	1205	12
26.	<i>Information & Public Relation</i>	11	30	433	157	631	20
27.	<i>Information Technology</i>	5	1	13	7	26	62
28.	<i>Irrigation & Flood Control</i>	40	35	452	230	757	19
29.	<i>Jail & Prisons</i>	10	12	343	101	466	26
30.	<i>Judicial</i>	37	5	151	101	294	38

Table-X (Contd.)

Sl. No.	Department	Class-I	Class-II	Class-III	Class-IV	Total	Rank
1	2	3	4	5	6	7	8
31.	Labour	12	7	85	51	155	46
32.	Land Record & Survey	16	6	180	125	327	34
33.	Land Resource	17	8	88	29	142	49
34.	Legal Metrology (W &M) & Consumer Protection	10	1	70	56	137	50
35.	Lotteries	5	3	22	18	48	60
36.	N.B.S.E	31	3	38	14	86	54
37.	N.P.S.C	14	5	26	27	72	56
38.	N.S.T	29	21	712	330	1092	14
39.	P.W.D (Housing)	68	108	1081	1028	2285	9
40.	P.W.D (Mechanical)	17	64	515	349	945	17
41.	PWD (N.H)	26	36	197	131	390	29
42.	P.W.D (Road & Bridges)	151	215	2561	1783	4710	4
43.	Planning & Co-ordination	26	19	97	32	174	45
44.	Police	293	228	22560	2552	25633	1
45.	Printing & Stationary	13	9	283	30	335	33
46.	Public Health Engineering	75	146	1228	2637	4086	6
47.	Rural Development	122	48	530	254	954	16
48.	S.C.E.R.T	47	23	43	38	151	47
49.	S.I.R.D	10	2	15	13	40	61
50.	School Education	163	223	12827	2060	15273	2
51.	Science & Technology	5		15	5	25	63
52.	Sericulture	16	12	197	90	315	36
53.	Social Security & Welfare	11	2	458	129	600	22
54.	Soil Conservation	62	51	530	238	881	18
55.	Supply	15	2	309	202	528	24
56.	Taxes	12	13	109	83	217	41
57.	Tourism	14	11	56	52	133	51
58.	Transport	7	10	128	42	187	44
59.	Treasury & Accounts	29	25	333	148	535	23
60.	Underdeveloped Areas	13	8	36	41	98	53
61.	Urban Development	33	26	115	107	281	39
62.	Vigilance Commission	16	7	40	18	81	55
63.	Women Development	7	3	40	7	57	59
64.	Youth Resources & Sports	11	20	162	157	350	31
Total		3707	2401	61264	23936	91308	

TABLE-XI (A)

DISTRIBUTION OF GOVERNMENT EMPLOYEES ACCORDING TO STATUS, DEPARTMENT AND DISTRICT AS ON 31ST MARCH, 2011, DISTRICT : KOHIMA.

Sl.No.	Department	Class-I	Class-II	Class-III	Class-IV	Total	Rank
1	2	3	4	5	6	7	8
1.	<i>Administrative Training Institute</i>	13		26	22	61	48
2.	<i>Agriculture</i>	38	15	129	43	225	20
3.	<i>Animal Husbandry & Veterinary</i>	58	13	187	132	390	13
4.	<i>Art and Culture</i>	14	15	66	51	146	32
5.	<i>Assembly Secretariat</i>	37	12	99	66	213	23
6.	<i>Civil Secretariat</i>	279	101	1260	731	2371	2
7.	<i>Co-operation</i>	6	4	74	19	103	35
8.	<i>Directorate of Technical Education</i>	23	3	35	19	80	42
9.	<i>Directorate of Urban Development</i>	26	21	75	75	197	24
10.	<i>Economics & Statistics</i>	16	28	253	31	328	16
11.	<i>Election</i>	6	5	27	13	51	53
12.	<i>Electricity</i>	39	49	338	231	657	8
13.	<i>Employment & Craftsman Training</i>	13	3	103	42	161	29
14.	<i>Evaluation</i>	7	3	28	9	47	56
15.	<i>Excise</i>	1	4	42	3	50	54
16.	<i>Fire Service</i>	2	6	47	270	325	17
17.	<i>Fisheries</i>	9	8	56	24	97	38
18.	<i>Forest</i>	24	16	139	42	221	22
19.	<i>General Administration</i>	28	10	253	201	492	9
20.	<i>Governor's Secretariat</i>	10	1	22	33	66	47
21.	<i>Health & Family Welfare</i>	185	19	1052	624	1880	4
22.	<i>Higher Education</i>	166	5	99	121	391	12
23.	<i>Home Guards</i>	6	2	36	11	55	51
24.	<i>Horticulture</i>	16	6	34	43	99	36
25.	<i>Industries</i>	62	18	270	89	439	11
26.	<i>Information & Public Relation</i>	11	11	180	43	245	18
27.	<i>Information Technology</i>	5	1	13	7	26	62
28.	<i>Irrigation & Flood Control</i>	16	6	94	42	158	30
29.	<i>Jail & Prisons</i>	9	5	128	13	155	31
30.	<i>Judicial</i>	5		19	13	37	58

**TABLE-XI (Contd.)
DISTRICT : KOHIMA.**

Sl. No.	Department	Class-I	Class-II	Class-III	Class-IV	Total	Rank
1	2	3	4	5	6	7	8
31.	<i>Labour</i>	7		33	12	52	52
32.	<i>Land Record & Survey</i>	1		20	12	33	60
33.	<i>Land Resource</i>	11	4	50	12	77	44
34.	<i>Legal Metrology (W &M) & Consumer Protection</i>	3	1	35	20	59	49
35.	<i>Lotteries</i>	5	3	22	18	48	55
36.	<i>N.B.S.E</i>	31	3	38	14	86	39
37.	<i>N.P.S.C</i>	14	5	26	27	72	45
38.	<i>N.S.T</i>	3	1	138	48	190	25
39.	<i>P.W.D (Housing)</i>	50	77	603	531	1261	5
40.	<i>P.W.D (N.H)</i>	14	14	117	98	243	19
41.	<i>P.W.D (Mechanical)</i>	12	44	288	130	474	10
42.	<i>P.W.D (Road & Bridges)</i>	44	51	456	263	814	6
43.	<i>Planning & Co-ordination</i>	26	19	97	32	174	28
44.	<i>Police</i>	115	83	4698	323	5219	1
45.	<i>Printing & Stationary</i>	13	9	283	30	335	15
46.	<i>Public Health Engineering</i>	30	29	266	405	730	7
47.	<i>Rural Development</i>	39	6	138	39	222	21
48.	<i>S.C.E.R.T</i>	19	22	30	11	82	40
49.	<i>S.I.R.D</i>	10	2	15	13	40	57
50.	<i>School Education</i>	51	61	1826	298	2236	3
51.	<i>Science & Technology</i>	5		15	5	25	63
52.	<i>Sericulture</i>	9	6	50	13	78	43
53.	<i>Social Security & Welfare</i>	11	10	88	25	134	33
54.	<i>Soil Conservation</i>	34	18	224	93	369	14
55.	<i>Supply</i>	1		21	14	36	59
56.	<i>Taxes</i>	1	1	22	8	32	61
57.	<i>Tourism</i>	14	11	56	52	133	34
58.	<i>Transport</i>	6	4	42	16	68	46
59.	<i>Treasury & Accounts</i>	15	12	116	32	175	27
60.	<i>Underdeveloped Areas</i>	13	8	36	41	98	37
61.	<i>Vigilance Commission</i>	16	7	40	18	81	41
62.	<i>Women Development</i>	7	3	40	7	57	50
63.	<i>Youth Resources & Sports</i>	11	10	101	61	183	26
Total		1771	914	15214	5784	23683	

TABLE-XI (B)
DISTRICT: PHEK

Sl. No.	Department	Class-I	Class-II	Class-III	Class-IV	Total	Rank
1	2	3	4	5	6	7	8
1.	<i>Agriculture</i>	6	10	62	17	95	9
2.	<i>Animal Husbandry & Veterinary</i>	8	1	24	60	93	11
3.	<i>Art & Culture</i>		1	6	3	10	31
4.	<i>Co-operation</i>	1		15	3	19	26
5.	<i>Economics & Statistics</i>		1	13	3	17	28
6.	<i>Election</i>	1	1	5	3	10	31
7.	<i>Electricity</i>	4	9	99	86	198	7
8.	<i>Employment & Craftsman Training</i>	1	3	20	9	33	19
9.	<i>Evaluation</i>		1	6	2	9	32
10.	<i>Excise</i>	1	1	21	6	29	21
11.	<i>Fisheries</i>	1	1	11	4	17	28
12.	<i>Forest</i>	1	9	74	7	91	12
13.	<i>General Administration</i>	11	5	228	842	1086	3
14.	<i>Health & Family Welfare</i>	26	7	266	320	619	5
15.	<i>Higher Education</i>	56	3	18	13	90	13
16.	<i>Home Guards</i>	1	1	8	12	22	23
17.	<i>Horticulture</i>	1	2	8	4	15	29
18.	<i>Industries</i>	2	2	21	17	42	18
19.	<i>Information & Public Relation</i>		3	26	13	42	18
20.	<i>Irrigation & Flood Control</i>	1	3	15	9	28	22
21.	<i>Jail & Prison</i>		1	27	3	31	20
22.	<i>Judicial</i>	5		18	10	33	19
23.	<i>Labour</i>	1	1	8	8	18	27
24.	<i>Land Records & Survey</i>	1		9	11	21	24
25.	<i>Legal Metrology (W & M) & Consumer Protection</i>	1		4	4	9	32
26.	<i>N.S.T</i>		2	34	14	50	15
27.	<i>P.W.D (Housing)</i>			44	70	114	8
28.	<i>P.W.D (Mechanical)</i>			19	25	44	17

TABLE-XI(B) (Cont.)
DISTRICT : PHEK

Sl. No.	Department	Class-I	Class-II	Class-III	Class-IV	Total	Rank
1	2	3	4	5	6	7	8
29.	<i>P.W.D (Road & Bridges)</i>	4	7	130	512	653	4
30.	<i>Police</i>	14	7	1525	128	1674	1
31.	<i>Public Health Engineering</i>	4	10	89	311	414	6
32.	<i>Rural Development</i>	10	4	58	22	94	10
33.	<i>School Education</i>	16	5	1072	194	1287	2
34.	<i>Sericulture</i>		1	12	7	20	25
35.	<i>Social Security & Welfare</i>		6	37	6	49	16
36.	<i>Soil Conservation</i>	4	6	37	17	64	14
37.	<i>Supply</i>	1		16	11	28	22
38.	<i>Taxes</i>		1	4	4	9	32
39.	<i>Transport</i>		1	9	4	14	30
40.	<i>Treasury & Accounts</i>	2	2	30	16	50	15
41.	<i>Youth Resources & Sports</i>		2	8	7	17	28
42.	<i>Land Resource</i>	1		4	2	7	33
43.	<i>Urban Development</i>	1	1	4	3	9	32
Total		187	121	4144	2822	7274	

TABLE-XI (C)
DISTRICT : MOKOKCHUNG

Sl. No.	Department	Class-I	Class-II	Class-III	Class-IV	Total	Rank
1	2	3	4	5	6	7	8
1.	<i>Agriculture</i>	12	17	114	83	226	11
2.	<i>Animal Husbandry & Veterinary</i>	20		77	146	243	9
3.	<i>Art & Culture</i>		1	5	3	9	43
4.	<i>Co-operation</i>	1		17	8	26	35
5.	<i>Economics & Statistics</i>		1	27	6	34	31
6.	<i>Election</i>		2	5	3	10	42
7.	<i>Electricity</i>	18	34	309	237	598	5
8.	<i>Employment & Craftsman Training</i>	1	3	20	11	35	30
9.	<i>Evaluation</i>		1	5	2	8	44
10.	<i>Excise</i>	1	4	30	2	37	29
11.	<i>Fisheries</i>	1	1	13	16	31	33
12.	<i>Forest</i>	1	8	70	14	93	17
13.	<i>General Administration</i>	18	1	155	97	271	8
14.	<i>Health & Family Welfare</i>	49	10	479	407	945	3
15.	<i>Higher Education</i>	70		28	65	163	12
16.	<i>Home Guards</i>	1	1	6	80	88	18
17.	<i>Horticulture</i>	2	2	31	60	95	16
18.	<i>Industries</i>	1	3	42	28	74	20
19.	<i>Information & Public Relation</i>		2	41	14	57	24
20.	<i>Irrigation & Flood Control</i>	3	3	85	35	126	13
21.	<i>Jail & Prison</i>	1	1	51	12	65	21
22.	<i>Judicial</i>	5	1	18	16	40	28
23.	<i>Labour</i>	1		7	5	13	41
24.	<i>Land Records & Survey</i>			19	10	29	34
25.	<i>Legal Metrology (W & M) & Consumer Protection</i>	1		5	8	14	40
26.	<i>N.S.T</i>	3	2	83	33	121	14
27.	<i>P.W.D (Housing)</i>	5	5	143	235	388	7

TABLE-XI (C) (Cont.)
DISTRICT : MOKOKCHUNG

Sl. No.	Department	Class-I	Class-II	Class-III	Class-IV	Total	Rank
1	2	3	4	5	6	7	8
28.	<i>P.W.D (Mechanical)</i>	3	13	128	96	240	10
29.	<i>PWD (N.H)</i>	4	8	63	31	106	15
30.	<i>P.W.D (Road & Bridges)</i>	31	41	486	194	752	4
31.	<i>Police</i>	30	27	2153	937	3147	1
32.	<i>Public Health Engineering</i>	7	20	188	217	432	6
33.	<i>Rural Development</i>	12	7	59	28	106	15
34.	<i>School Education</i>	13	10	2031	223	2277	2
35.	<i>SCERT</i>	14		5	14	33	32
36.	<i>Sericulture</i>	1		36	12	49	26
37.	<i>Social Security & Welfare</i>		7	44	10	61	23
38.	<i>Soil Conservation</i>	4	9	50	18	81	19
39.	<i>Supply</i>	1		25	19	45	27
40.	<i>Taxes</i>	1	3	14	6	24	37
41.	<i>Transport</i>	1		16	5	22	38
42.	<i>Technical Education</i>	9		7	9	25	36
43.	<i>Treasury & Accounts</i>	2	2	34	16	54	25
44.	<i>Youth Resources & Sports</i>		2	18	44	64	22
45.	<i>Land Resource</i>	1		5	3	9	43
46.	<i>Urban Development</i>	1	4	6	6	17	39
Total		350	256	7253	3524	11383	

TABLE-XI (D)
DISTRICT : WOKHA

Sl. No.	Department	Class-I	Class-II	Class-III	Class-IV	Total	Rank
1	2	3	4	5	6	7	8
1.	<i>Agriculture</i>	7	11	73	38	129	7
2.	<i>Animal Husbandry & Veterinary</i>	7	1	51	52	111	8
3.	<i>Art & Culture</i>		1	5	3	9	32
4.	<i>Co-operation</i>	1		14	4	19	26
5.	<i>Economics & Statistics</i>		1	19	2	22	24
6.	<i>Election</i>	1	1	5	3	10	31
7.	<i>Electricity</i>	3	9	49	36	97	9
8.	<i>Employment & Craftsman Training</i>	1	2	21	14	38	17
9.	<i>Evaluation</i>		1	5	1	7	33
10.	<i>Excise</i>	1	1	18	4	24	22
11.	<i>Fisheries</i>	1	2	11	6	20	25
12.	<i>Forest</i>	3	4	54	10	71	11
13.	<i>General Administration</i>	16	3	260	101	380	4
14.	<i>Health & Family Welfare</i>	25	2	187	168	382	3
15.	<i>Higher Education</i>	22	1	11	20	54	13
16.	<i>Home Guards</i>	1	1	5	3	10	31
17.	<i>Horticulture</i>	1	2	18	31	52	14
18.	<i>Industries</i>	4	5	29	26	64	12
19.	<i>Information & Public Relation</i>		4	36	11	51	15
20.	<i>Irrigation & Flood Control</i>	2	1	19	8	30	20
21.	<i>Jail & Prison</i>			29	2	31	19
22.	<i>Judicial</i>	3		9	5	17	27
23.	<i>Labour</i>		1	4	2	7	33
24.	<i>Land Records & Survey</i>	1		18	10	29	21
25.	<i>Legal Metrology (W & M) & Consumer Protection</i>	1		6	5	12	30
26.	<i>N.S.T</i>		1	28	25	54	13
27.	<i>P.W.D (Road & Bridges)</i>	13	25	215	91	344	5
28.	<i>Police</i>	12	9	1551	119	1691	1

TABLE-XI (D) (Cont.)
DISTRICT : WOKHA

Sl. No.	Department	Class-I	Class-II	Class-III	Class-IV	Total	Rank
1	2	3	4	5	6	7	8
29.	<i>Land Resource</i>	1		3	3	7	33
30.	<i>Public Health Engineering</i>	4	9	64	191	268	6
31.	<i>Rural Development</i>	10	7	32	31	80	10
32.	<i>School Education</i>	7	6	882	169	1064	2
33.	<i>Sericulture</i>	2		13	4	19	26
34.	<i>Social Security & Welfare</i>		5	33	8	46	16
35.	<i>Soil Conservation</i>	3		36	12	51	15
36.	<i>Supply</i>	1		17	5	23	23
37.	<i>Taxes</i>	1		7	4	12	30
38.	<i>Transport</i>		1	11	4	16	28
39.	<i>Treasury & Accounts</i>	1	2	22	10	35	18
40.	<i>Urban Development</i>	1		5	4	10	31
41.	<i>Youth Resources & Sports</i>		1	6	7	14	29
Total		157	120	3881	1252	5410	

TABLE-XI (E)
DISTRICT : ZUNHEBOTO

Sl. No	Department	Class-I	Class-II	Class-III	Class-IV	Total	Rank
1	2	3	4	5	6	7	8
1.	<i>Agriculture</i>	5	4	44	20	73	11
2.	<i>Animal Husbandry & Veterinary</i>	3		57	30	90	10
3.	<i>Art & Culture</i>		1	5	3	9	31
4.	<i>Co-operation</i>	1		11	4	16	27
5.	<i>Economics & Statistics</i>		1	14	5	20	24
6.	<i>Election</i>		2	4	3	9	31
7.	<i>Electricity</i>	3	3	72	52	130	7
8.	<i>Employment & Craftsman Training</i>	1	3	12	8	24	23
9.	<i>Evaluation</i>		1	4	2	7	33
10.	<i>Excise</i>	1	2	19	3	25	22
11.	<i>Fisheries</i>		2	14	2	18	25
12.	<i>Forest</i>	4	4	39	12	59	13
13.	<i>General Administration</i>	17	3	319	178	517	5
14.	<i>Health & Family Welfare</i>	19		234	288	541	4
15.	<i>Higher Education</i>	22	1	12	10	45	17
16.	<i>Home Guards</i>	1	1	5	2	9	31
17.	<i>Horticulture</i>	2	1	13	17	33	20
18.	<i>Industries</i>	5	1	37	30	73	11
19.	<i>Information & Public Relation</i>		3	36	11	50	16
20.	<i>Irrigation & Flood Control</i>	2	2	17	8	29	21
21.	<i>Jail & Prison</i>			4	13	17	26
22.	<i>Judicial</i>	2	1	7	3	13	28
23.	<i>Land Records & Survey</i>		1	11	12	24	23
24.	<i>Legal Metrology (W & M) & Consumer Protection</i>	1		6	5	12	29
25.	<i>N.S.T</i>	1		41	14	56	14
26.	<i>P.W.D (Road & Bridges)</i>	11	15	345	183	554	3
27.	<i>Police</i>	13	12	1801	122	1948	2
28.	<i>Public Health Engineering</i>	4	15	87	216	322	6

TABLE-XI (E) (Cont.)
DISTRICT : ZUNHEBOTO

Sl. No.	Department	Class-I	Class-II	Class-III	Class-IV	Total	Rank
1	2	3	4	5	6	7	8
29.	<i>Rural Development</i>	9	3	53	27	92	9
30.	<i>School Education</i>	12	13	1874	166	2065	1
31.	<i>Sericulture</i>		1	4	2	7	33
32.	<i>Social Security & Welfare</i>		7	43	15	65	12
33.	<i>Soil Conservation</i>	3	2	30	18	53	15
34.	<i>Supply</i>	1		25	15	41	19
35.	<i>Taxes</i>		2	4	5	11	30
36.	<i>Transport</i>		1	8	2	11	30
37.	<i>Treasury & Accounts</i>	1	2	23	16	42	18
38.	<i>Youth Resources & Sports</i>		2	7	8	17	26
39.	<i>Land Resource</i>		1	4	2	7	33
40.	<i>Technical Education</i>	15		36	50	101	8
41.	<i>Urban Development</i>	1		4	3	8	32
Total		160	113	5385	1585	7243	

TABLE-XI (F)
DISTRICT: TUENSANG

Sl. No.	Department	Class-I	Class-II	Class-III	Class-IV	Total	Rank
1	2	3	4	5	6	7	8
1.	<i>Agriculture</i>	4	10	67	39	120	10
2.	<i>Animal Husbandry & Veterinary</i>	11	1	42	69	123	9
3.	<i>Art & Culture</i>		1	12	6	19	33
4.	<i>Co-operation</i>	1	1	15	6	23	30
5.	<i>Economics & Statistics</i>		1	25	7	33	25
6.	<i>Election</i>		2	4	4	10	37
7.	<i>Electricity</i>	5	9	231	186	431	6
8.	<i>Employment & Craftsman Training</i>	1	3	17	8	29	27
9.	<i>Evaluation</i>		1	6	2	9	38
10.	<i>Excise</i>		4	45	3	52	21
11.	<i>Fisheries</i>	1	1	20	9	31	26
12.	<i>Forest</i>	1	6	60	9	76	14
13.	<i>General Administration</i>	18	2	316	156	492	4
14.	<i>Health & Family Welfare</i>	27	9	396	309	741	3
15.	<i>Higher Education</i>	34	1	15	15	65	18
16.	<i>Home Guards</i>	1	1	4	3	9	38
17.	<i>Horticulture</i>	1	1	8	21	31	26
18.	<i>Industries</i>	4	4	31	21	60	19
19.	<i>Information & Public Relation</i>		3	50	35	88	13
20.	<i>Irrigation & Flood Control</i>	2	1	24	15	42	23
21.	<i>Jail & Prison</i>		2	10	44	56	20
22.	<i>Judicial</i>	3		10	4	17	34
23.	<i>Labour</i>	1		5	3	9	38
24.	<i>Land Records & Survey</i>		1	16	11	28	28
25.	<i>Legal Metrology (W & M) & Consumer Protection</i>	1		3	5	9	38
26.	<i>N.S.T</i>	1		84	27	112	11
27.	<i>P.W.D (Housing)</i>	2	7	98	18	125	8
28.	<i>P.W.D (Mechanical)</i>	2	4	20	45	71	17
29.	<i>PWD (N.H)</i>	4	8	7	2	21	32
30.	<i>P.W.D (Road & Bridges)</i>	11	6	187	102	306	7
31.	<i>Police</i>	10	7	1595	122	1734	2
32.	<i>Public Health Engineering</i>	4	10	112	313	439	5
33.	<i>Rural Development</i>	6	3	44	19	72	16
34.	<i>School Education</i>	16	42	1531	193	1782	1
35.	<i>Sericulture</i>		1	16	9	26	29
36.	<i>SCERT</i>	14	1	8	13	36	24
37.	<i>Social Security & Welfare</i>		8	55	11	74	15
38.	<i>Soil Conservation</i>	5	1	52	31	89	12
39.	<i>Supply</i>	1		18	29	48	22
40.	<i>Taxes</i>		2	8	7	17	34
41.	<i>Transport</i>		1	10	4	15	35
42.	<i>Treasury & Accounts</i>	1	1	14	6	22	31
43.	<i>Youth Resources & Sports</i>		1	3	5	9	38
44.	<i>Urban Development</i>	1		6	7	14	36
45.	<i>Land Resources</i>	1		4		5	39
Total		195	168	5304	1953	7620	

TABLE-XI(G)
DISTRICT : MON

Sl. No.	Department	Class-I	Class-II	Class-III	Class-IV	Total	Rank
1	2	3	4	5	6	7	8
1.	<i>Agriculture</i>	6	8	72	25	111	8
2.	<i>Animal Husbandry & Veterinary</i>	10		19	48	77	12
3.	<i>Art & Culture</i>		1	5	3	9	33
4.	<i>Co-operation</i>	1		7	4	12	31
5.	<i>Economics & Statistics</i>		1	16	3	20	27
6.	<i>Election</i>	1	1	5	2	9	33
7.	<i>Electricity</i>	3	5	72	74	154	7
8.	<i>Employment & Craftsman Training</i>	1	2	24	7	34	21
9.	<i>Evaluation</i>		1	4	3	8	34
10.	<i>Excise</i>	1	4	33	5	43	18
11.	<i>Fisheries</i>		2	12	11	25	24
12.	<i>Forest</i>	1	6	79	8	94	9
13.	<i>General Administration</i>	17	1	222	144	384	5
14.	<i>Health & Family Welfare</i>	22	3	189	214	428	3
15.	<i>Higher Education</i>	23	1	12	16	52	17
16.	<i>Home Guards</i>	1	1	16	4	22	25
17.	<i>Horticulture</i>	1	1	12	11	25	24
18.	<i>Industries</i>	5	2	23	13	43	18
19.	<i>Information & Public Relation</i>		3	43	17	63	14
20.	<i>Irrigation & Flood Control</i>	3	4	37	18	62	15
21.	<i>Jail & Prison</i>		1	21	5	27	23
22.	<i>Judicial</i>	2	1	10	6	19	28
23.	<i>Labour</i>		1	5	5	11	32
24.	<i>Land Records & Survey</i>		1	9	10	20	27
25.	<i>N.S.T</i>	2	2	53	26	83	11
26.	<i>P.W.D (Road & Bridges)</i>	15	15	201	81	312	6
27.	<i>Police</i>	9	12	1514	113	1648	1
28.	<i>Public Health Engineering</i>	3	8	104	303	418	4
29.	<i>Rural Development</i>	11	10	38	28	87	10
30.	<i>School Education</i>	12	16	891	142	1061	2
31.	<i>Sericulture</i>		1	13	17	31	22
32.	<i>Social Security & Welfare</i>		6	43	11	60	16
33.	<i>Soil Conservation</i>	3	2	24	13	42	19
34.	<i>Supply</i>	1		24	15	40	20
35.	<i>Taxes</i>	1	1	6	5	13	30
	<i>Transport</i>		1	12	3	16	29
37.	<i>Treasury & Accounts</i>	2	2	35	29	68	13
38.	<i>Weight & Measures</i>	1		4	3	8	34
39.	<i>Youth Resources & Sports</i>		2	10	9	21	26
40.	<i>Urban Development</i>	1		6	4	11	32
41.	<i>Land Resources</i>		1	3	2	6	35
Total	159	130	3928	1460	5677		

TABLE-XI (H)
DISTRICT : KIPHIRE

Sl. No.	Department	Class-I	Class-II	Class-III	Class-IV	Total	Rank
1	2	3	4	5	6	7	8
1.	<i>Agriculture</i>	2	2	25	13	42	8
2.	<i>Animal Husbandry & Veterinary</i>	3		14	12	29	11
3.	<i>Election</i>		2	5	3	10	21
4.	<i>Employment</i>			3	2	5	23
5.	<i>General Administration</i>	10	1	147	110	268	3
6.	<i>Health & Family Welfare</i>	10		89	109	208	4
7.	<i>Higher Education</i>	17		4	11	32	10
8.	<i>Horticulture</i>	1	1	6	3	11	20
9.	<i>Industries</i>	1		6	8	15	17
10.	<i>Irrigation & Flood Control</i>	1		12	6	19	15
11.	<i>P.H.E.D</i>	4		56	293	353	1
12.	<i>P.W.D (Road & Bridges)</i>	5	5	75	22	107	6
13.	<i>Economics & Statistics</i>		1	11	3	15	17
14.	<i>Police</i>	3	8	289	19	319	2
15.	<i>Rural Development</i>	5	1	20	12	38	9
16.	<i>School Education</i>	4	2	112	35	153	5
17.	<i>Social Security & Welfare</i>		3	16	4	23	12
18.	<i>Supply</i>	1		9	12	22	13
19.	<i>Treasury & Accounts</i>	1		8	4	13	18
20.	<i>I.P.R</i>			5	6	11	20
21.	<i>Fisheries</i>		1	8	3	12	19
22.	<i>Sericulture</i>	1	1	8	2	12	19
23.	<i>Electricity</i>	1	2	11	74	88	7
24.	<i>Co-operation</i>		1	3	3	7	22
25.	<i>Land Resource</i>		1	3	1	5	23
26.	<i>Forest</i>	1	1	12	2	16	16
27.	<i>N.S.T</i>		1	23	5	29	11
28.	<i>Soil & Water Conservation</i>		1	13	9	23	12
29.	<i>Judicial</i>	1		4	2	7	22
30.	<i>Labour</i>	1		4	6	11	20
31.	<i>P.W.D (N.H)</i>	4	6	10	2	22	14
Total		77	41	1011	796	1925	

TABLE-XI (I)
DISTRICT : LONGLENG

Sl. No.	Department	Class-I	Class-II	Class-III	Class-IV	Total	Rank
1	2	3	4	5	6	7	8
1.	<i>Agriculture</i>	2	2	20	5	29	8
2.	<i>Animal Husbandry & Veterinary</i>	2		8	6	16	14
3.	<i>Economics & Statistics</i>		1	11	4	16	14
4.	<i>Election</i>		2	5	3	10	17
5.	<i>General Administration</i>	4	1	119	116	240	3
6.	<i>Health & Family Welfare</i>	5		67	104	176	4
7.	<i>Higher Education</i>	17	1	5	12	35	7
8.	<i>Horticulture</i>	1	2	6	2	11	16
9.	<i>Industries</i>	1	1	11	15	28	9
10.	<i>Irrigation & Flood Control</i>	1	2	10	12	25	11
11.	<i>P.W.D (Road & Bridges)</i>	3	3	50	10	66	5
12.	<i>Police</i>	3	2	221	18	244	2
13.	<i>Rural Development</i>	5	1	30	13	49	6
14.	<i>School Education</i>	7	3	850	80	940	1
15.	<i>Sericulture</i>	1		9	17	27	10
16.	<i>Social Security & Welfare</i>		2	12	3	17	13
17.	<i>Soil & Water Conservation</i>	1	2	13	6	22	12
18.	<i>Treasury & Accounts</i>		1	6	5	12	15
19.	<i>I.P.R</i>			4	3	7	18
20.	<i>Labour</i>		1	1		2	20
21.	<i>Land Resource</i>		1	4		5	19
Total		53	28	1462	434	1977	

TABLE-XI (J)
DISTRICT : PEREN

Sl. No.	Department	Class-I	Class-II	Class-III	Class-IV	Total	Rank
1	2	3	4	5	6	7	8
1.	<i>Agriculture</i>	3	1	17	9	30	13
2.	<i>Animal Husbandry & Veterinary</i>	4	1	18	24	47	8
3.	<i>Co-operation</i>		1	2	2	5	22
4.	<i>Economics & Statistics</i>		1	12	5	18	15
5.	<i>Election</i>		1	5	3	9	20
6.	<i>Electricity</i>	1	5	32	48	86	7
7.	<i>Employment & Craftsman Training</i>			3	2	5	22
8.	<i>Fisheries</i>		1	11	1	13	17
9.	<i>Forest</i>	3	7	68	8	86	7
10.	<i>General Administration</i>	10	1	113	64	188	4
11.	<i>Health & Family Welfare</i>	20		150	72	242	3
12.	<i>Higher Education</i>	19	1	4	8	32	11
13.	<i>Horticulture</i>	1	4	6	9	20	14
14.	<i>I.P.R</i>		1	3	2	6	21
15.	<i>Industries</i>	1		8	2	11	19
16.	<i>Irrigation & Flood Control</i>	1		15	4	20	14
17.	<i>Jail & Prison</i>		1	26	4	31	12
18.	<i>P.H.E.D</i>	4	9	31	83	127	6
19.	<i>P.W.D (Road & Bridges)</i>	5	14	102	46	167	5
20.	<i>Police</i>	12	8	1181	145	1346	1
21.	<i>Rural Development</i>	5	1	17	11	34	10
22.	<i>School Education</i>	8	6	549	83	646	2
23.	<i>Sericulture</i>	1	1	8	2	12	18
24.	<i>Social Security & Welfare</i>		4	27	6	37	9
25.	<i>Supply</i>	1		11	6	18	15
26.	<i>Treasury & Accounts</i>	1		8	5	14	16
27.	<i>Soil & Water Conservation</i>	2	4	20	8	34	10
28.	<i>Judicial</i>	1		4	4	9	20
29.	<i>Land Resource</i>	1		2		3	23
Total		104	73	2453	666	3296	

TABLE-XI (K)
DISTRICT : DIMAPUR

Sl. No.	Department	Class-I	Class-II	Class-III	Class-IV	Total	Rank
1	2	3	4	5	6	7	8
1.	<i>Agriculture</i>	21	24	157	65	267	13
2.	<i>Animal Husbandry & Veterinary</i>	38	2	133	147	320	11
3.	<i>Art and Culture</i>		1	2	4	7	41
4.	<i>Co-operation</i>	2	1	23	9	35	31
5.	<i>Economics & Statistics</i>		1	73	7	81	25
6.	<i>Election</i>	1	1	5	3	10	38
7.	<i>Electricity</i>	17	27	256	305	605	5
8.	<i>Employment & Craftsman Training</i>	2	2	20	14	38	30
9.	<i>Evaluation</i>		1	5	2	8	40
10.	<i>Excise</i>	10	18	134	10	172	16
11.	Fisheries	1		32	11	44	29
12.	Forest	12	24	287	71	394	8
13.	General Administration	21	4	185	86	296	12
14.	Geology & Mining	53	23	178	111	365	9
15.	<i>Health & Family Welfare</i>	40	2	358	259	659	3
16.	Higher Education	47	1	20	29	97	23
17.	Home Guards	2	3	83	33	121	18
18.	Horticulture	3	3	32	52	90	24
19.	Industries	19	30	209	98	356	10
20.	Information & Public Relation			9	2	11	37
21.	Irrigation & Flood Control	8	13	124	73	218	15
22.	Jail & Prison		1	47	5	53	27
23.	Judicial	10	2	52	38	102	21
24.	Labour	1	3	18	10	32	33
25.	Land Records & Survey	13	3	78	49	143	17
26.	<i>Land Resources</i>	1		6	2	9	39
27.	Legal Metrology (W & M) & Consumer Protection	1		7	6	14	36
28.	N.S.T	19	12	228	138	397	7
29.	P.W.D (Housing)	11	19	193	174	397	7
30.	<i>P.W.D (Mechanical)</i>		3	60	53	116	19
31.	<i>P.W.D (Road & Bridges)</i>	9	33	314	279	635	4
32.	Police	72	61	6038	506	6677	1
33.	<i>Public Health Engineering</i>	11	28	231	305	575	6
34.	<i>Rural Development</i>	10	5	41	24	80	26
35.	<i>School Education</i>	17	59	1209	477	1762	2
36.	<i>Sericulture</i>	1		28	5	34	32
37.	<i>Social Security & Welfare</i>		14	60	30	104	20
38.	<i>Soil Conservation</i>	3	6	31	13	53	27
39.	<i>Supply</i>	6	2	143	76	227	14
40.	<i>Taxes</i>	8	3	44	44	99	22
41.	<i>Transport</i>		1	20	4	25	34
42.	<i>Treasury & Accounts</i>	3	1	37	9	50	28
43.	<i>Urban Development</i>	1		10	6	17	35
44.	<i>Youth Resources & Sports</i>			9	16	25	34
Total	494	437	11229	3660	15820		

TABLE-XII**DISTRIBUTION OF GOVERNMENT EMPLOYEES BY STATUS AND EDUCATIONAL QUALIFICATION
AS ON 31ST MARCH, 2011.**

<i>Educational Qualification</i>	STATUS									
	<i>Class-I</i>		<i>Class-II</i>		<i>Class-III</i>		<i>Class-IV</i>		<i>Total</i>	
	<i>Number</i>	<i>P.C</i>	<i>Number</i>	<i>P.C</i>	<i>Number</i>	<i>P.C</i>	<i>Number</i>	<i>P.C</i>	<i>Number</i>	<i>P.C</i>
1	2	3	4	5	6	7	8	9	10	11
<i>Post Graduate</i>	1167	31.48	230	9.58	849	1.38	6	0.03	2252	2.47
<i>Graduate</i>	1569	42.33	853	35.53	7559	12.34	142	0.59	10123	11.09
<i>P.U/Intermediate</i>	673	18.16	698	29.07	8026	13.10	433	1.81	9830	10.76
<i>Matriculate</i>	253	6.82	479	19.95	14501	23.67	2838	11.86	18071	19.79
<i>Under Matric</i>	45	1.21	141	5.87	29877	48.77	18432	77	48495	53.11
<i>Illiterate</i>					452	0.74	2085	8.71	2537	2.78
Total	3707	100.00	2401	100.00	61264	100.00	23936	100.00	91308	100.00

TABLE-XIII**DISTRIBUTION OF GOVERNMENT EMPLOYEES BY STATUS AND PLAN /
NON-PLAN POST
AS ON 31ST MARCH, 2011.**

<i>Status</i>	<i>Plan Post</i>		<i>Non-Plan Post</i>		<i>Total</i>	
	<i>Number</i>	<i>P.C</i>	<i>Number</i>	<i>P.C</i>	<i>Number</i>	<i>P.C</i>
1	2	3	4	5	6	7
<i>Class-I</i>	424	11.44	3283	88.56	3707	100.00
<i>Class-II</i>	265	11.04	2136	88.96	2401	100.00
<i>Class-III</i>	6804	11.11	54460	88.89	61264	100.00
<i>Class-IV</i>	2355	9.84	21581	90.16	23936	100.00
Total	9848	10.79	81460	89.21	91308	100.00

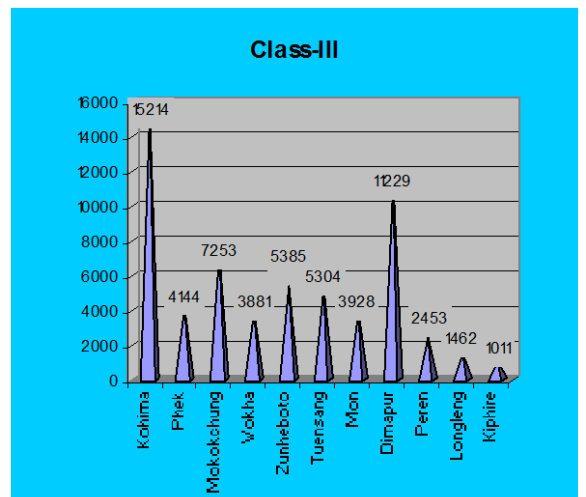
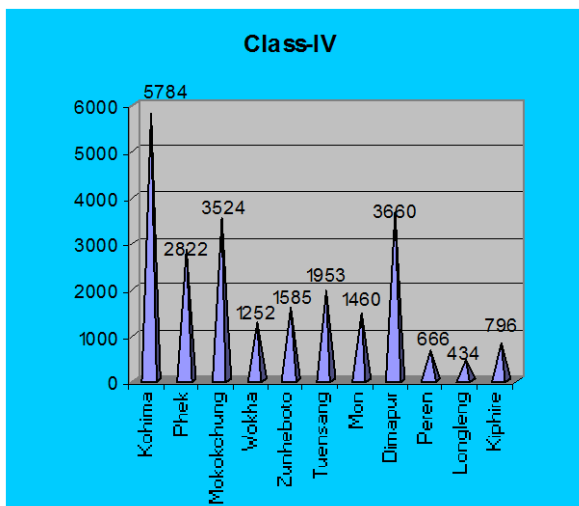
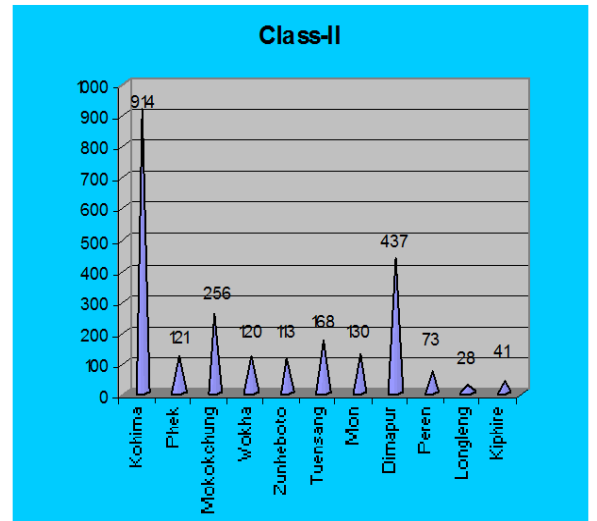
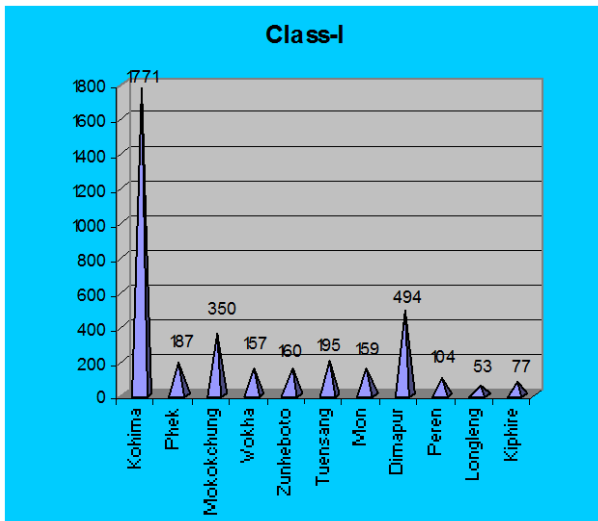
TABLE-XIII**DISTRIBUTION OF GOVERNMENT EMPLOYEES BY STATUS AND PLAN / NON-PLAN POST
AS ON 31ST MARCH, 2010**

<i>Status</i>	<i>Plan Post</i>		<i>Non-Plan Post</i>		<i>Total</i>	
	<i>Number</i>	<i>P.C</i>	<i>Number</i>	<i>P.C</i>	<i>Number</i>	<i>P.C</i>
1	2	3	4	5	6	7
<i>Class-I</i>	418	11.51	3214	88.49	3632	100.00
<i>Class-II</i>	236	9.92	2144	90.08	2380	100.00
<i>Class-III</i>	4665	7.67	56178	92.33	60843	100.00
<i>Class-IV</i>	2108	8.91	21556	91.09	23664	100.00
Total	7427	8.20	83092	91.80	90519	100.00

TABLE-XIV**DISTRICT-WISE DISTRIBUTION OF GOVERNMENT EMPLOYEES ACCORDING TO STATUS AS ON 31ST MARCH, 2011.**

<i>District</i>	STATUS					
	<i>Class-I</i>	<i>Class-II</i>	<i>Class-III</i>	<i>Class-IV</i>	<i>Total</i>	<i>P.C</i>
<i>Kohima</i>	1771	914	15214	5784	23683	25.93
<i>Phek</i>	187	121	4144	2822	7274	7.97
<i>Mokokchung</i>	350	256	7253	3524	11383	12.47
<i>Wokha</i>	157	120	3881	1252	5410	5.93
<i>Zunheboto</i>	160	113	5385	1585	7243	7.93
<i>Tuensang</i>	195	168	5304	1953	7620	8.35
<i>Mon</i>	159	130	3928	1460	5677	6.22
<i>Dimapur</i>	494	437	11229	3660	15820	17.32
<i>Peren</i>	104	73	2453	666	3296	3.61
<i>Longleng</i>	53	28	1462	434	1977	2.16
<i>Kiphire</i>	77	41	1011	796	1925	2.11
Nagaland Total	3707	2401	61264	23936	91308	100.00

DISTRIBUTION OF GOVERNMENT EMPLOYEES, ACCORDING TO STATUS AND NAGA / NON-NAGA AS ON 31-3-2011.



SOURCE : (All the Directorates, Civil Secretariat & Governor's Secretariat)