

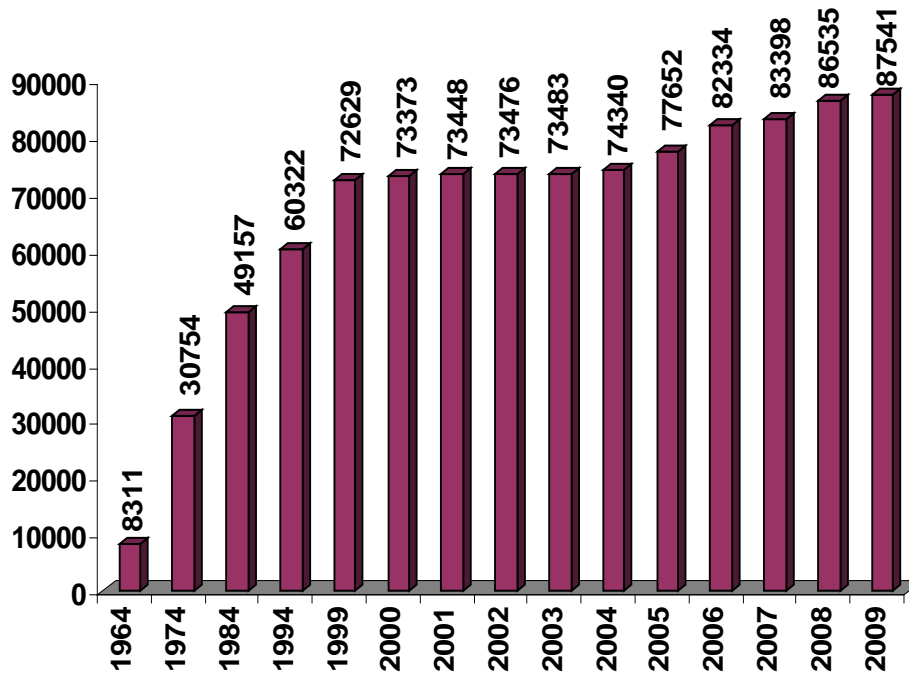
GENERAL FINDINGS OF THE CENSUS

Number of employees in different grades.

The total number of Government employees as on 31.3.2009 reported by the various department come to 87541 which is 4.40 % of the total provisional population of the state. Out of these, Class-I comprised of 3561, Class-II 2400, Class-III 59044 and Class-IV 22536. Class-IV employees constitutes 25.74 % of the total Government employees.

Growth of employees during 2007 to 2008.

The total strength of the employees increased to 87,541 in 2009 from 86,535 in 2008 indicating an increase of 1006 employees over a period of one year. The percentage was 1.15 % more than preceding year.



Male and Female employees.

It is observed from Table-III that the females play an insignificant role as Government employees in all categories except in Class-III service. The strength was 688, 424, 13085 and 3940 in Class-I, Class-II, Class-III and Class-IV respectively, representing 19.32 %, 17.67 %, 22.15 % and 17.48 % of the total employees.

Number of employees by religion.

This table shows that Christians constituted 92.73 % of the total employees with 6.41 % Hindus 0.13 % Muslims and 0.73 % belonging to other religion during the reference year.

Scheduled tribe and other employees.

These are as many as 81115 scheduled tribe employees in the state constituting 92.66 % of the total number of employees in this year. The percentage share of schedule tribe employees in Class-I, Class-II, Class-III and Class-IV service in this year were 92.39%, 93.85 %, 93.85 %, 89.52 % respectively in the respective cadres of services.

Distribution of employees by basic pay.

The different classes of employees are distributed in 12 (twelve) basic pay groups. It is observed that 11.56 % of the employees during this year received basic pay less than Rs. 2550 per month. Of the remaining 83.49 % received basic pay less than Rs. 8500 per month and the remaining 4.95 % received basic pay of Rs.8500 and above.

Distribution of employees according to range of emoluments (basic pay plus all other allowances).

Information on total emoluments which includes basic pay, innerline compensatory allowance, dearness allowance, winter allowance and house rent allowance were collected and analysed in this table. It is observed that 33.52 % of the total employees fell in the group of those whose total monthly emoluments were less than Rs.7000 to 20899 /- per month and 2.75 % got the emoluments between Rs.20900 and above per month.

Distribution of employees according to status and Naga / Non-Naga.

Naga employees constituted 92.59 % of the total employees and the remaining 7.41 % of the total employees were Non-Nagas

Distribution of employees according to status with age groups.

In this table, the data on age-wise distribution of various categories of employees is presented. Age of employees were collected in completed years as on 31.3.2009 but due to non reporting, it was not possible to get the age particulars of 12144 (13.87 %) employees. The available data indicate that 67.48 % of the employees were 45 years of age and below. The remaining 18.65 % of employees fall in the age group of 46 years and above.

Distribution of employees according to status in different departments.

In this table a list of 64 departments with their number of employees for the year 2009 is presented. It may be observed that the police department is employing 26.27 % of employees in 2009 ranked first as employer, followed by School Education Department, with 17.74 % of employees in this year.

Distribution of employees according to status by department in different district.

In this table a list of 64 departments with their number of employees according to status in different districts is presented.

Distribution of employees according to status with educational qualification.

It is observed from this table that no illiterate person were in Class-I and Class-II and in Class-III but in Class-IV there were 1762 employees who were illiterate.

Distribution of employees according to status with Plan / Non-Plan post.

This table show that -87.30 % of the post were Non-Plan and 12.70% were Plan Post

District-wise Distribution of employees.

It is observed in this table that Kohima District has the highest number of employees (due to the location of Civil Secretariat and offices of the head of departments) and Kiphire District has the lowest number of employees.

TABLE-XI (H)
DISTRICT : KIPHIRE

Sl. No.	Department	Class-I	Class-II	Class-III	Class-IV	Total	Rank
1	2	3	4	5	6	7	8
1.	<i>Agriculture</i>	3	2	72	25	102	6
2.	<i>Animal Husbandry & Veterinary</i>	3		15	13	31	10
3.	<i>Election</i>		2	5	3	10	20
4.	<i>Employment</i>			3	2	5	21
5.	<i>General Administration</i>	8	1	135	102	246	3
6.	<i>Health Services</i>	6		37	27	70	8
7.	<i>Higher Education</i>	17		5	7	29	11
8.	<i>Horticulture</i>	1	1	7	2	11	19
9.	<i>Industries</i>	1		6	7	14	16
10.	<i>Irrigation & Flood Control</i>	1		12	6	19	14
11.	<i>P.H.E.D</i>	4	9	58	295	366	1
12.	<i>P.W.D (Road & Bridges)</i>	5	5	75	22	107	5
13.	<i>Economics & Statistics</i>		1	2	1	4	22
14.	<i>Police</i>	2		251	14	267	2
15.	<i>Rural Development</i>	5	1	20	12	38	9
16.	<i>School Education</i>	4	2	112	35	153	4
17.	<i>Social Security & Welfare</i>		3	18	3	24	13
18.	<i>Supply</i>		1	8	9	18	15
19.	<i>Treasury & Accounts</i>		1	7	5	13	17
20.	<i>I.P.R</i>			6	6	12	18
21.	<i>Fisheries</i>		1	9	4	14	16
22.	<i>Sericulture</i>	1		13	16	30	11
23.	<i>Electricity</i>	1	2	16	64	83	7
Total		62	32	892	680	1666	

TABLE-X**DISTRIBUTION OF GOVERNMENT EMPLOYEES BY STATUS AND DEPARTMENT AS ON 31ST MARCH, 2009**

Sl.No.	Department	Class-I	Class-II	Class-III	Class-IV	Total	Rank
1	2	3	4	5	6	7	8
1.	<i>Administrative Training Institute</i>	13		26	22	61	54
2.	<i>Agriculture</i>	113	107	829	384	1433	11
3.	<i>Animal Husbandry & Veterinary</i>	161	20	629	695	1505	10
4.	<i>Art and Culture</i>	13	22	111	77	223	39
5.	<i>Assembly Secretariat</i>	33	15	97	59	204	41
6.	<i>Civil Secretariat</i>	279	101	1260	731	2371	8
7.	<i>Co-operation</i>	20	7	180	65	272	36
8.	<i>Economics & Statistics</i>	16	41	443	64	564	22
9.	<i>Election</i>	12	19	75	43	149	45
10.	<i>Electricity</i>	84	143	1400	1279	2906	7
11.	<i>Employment & Craftsman Training</i>	23	19	249	117	408	27
12.	<i>Evaluation</i>	7	17	102	39	165	44
13.	<i>Excise</i>	16	30	308	41	395	28
14.	<i>Fire Service</i>	2	6	47	270	325	35
15.	<i>Fisheries</i>	13	14	210	95	332	34
16.	<i>Forest</i>	51	83	864	181	1179	13
17.	<i>General Administration</i>	160	48	1950	1712	3870	6
18.	<i>Geology & Mining</i>	58	27	190	103	378	29
19.	<i>Governor's Secretariat</i>	11	2	22	34	69	53
20.	<i>Health Services</i>	420	52	3328	2748	6548	3
21.	<i>Higher Education</i>	455	4	221	290	970	16
22.	<i>Higher Technical Education</i>	4	1	16	6	27	58
23.	<i>Home Guards</i>	14	11	163	148	336	32
24.	<i>Horticulture</i>	30	24	178	256	488	25
25.	<i>Industries</i>	111	65	700	367	1243	12
26.	<i>Information & Public Relation</i>	12	17	332	158	519	24
27.	<i>Information Technology</i>	5	2	12	7	26	59
28.	<i>Irrigation & Flood Control</i>	40	35	452	230	757	19
29.	<i>Jail & Prisons</i>	10	12	343	101	466	26
30.	<i>Judicial</i>	30	5	119	76	230	38
31.	<i>Labour</i>	10	5	80	46	141	46
32.	<i>Land Record & Survey</i>	15	8	188	125	336	32
33.	<i>Legal Metrology (W & M) & Consumer Protection</i>	10	2	74	46	132	47
34.	<i>Lotteries</i>	5	3	25	18	51	56
35.	<i>N.B.S.E</i>	31	3	38	14	86	49

36.	<i>N.P.S.C</i>	14	5	26	27	72	51
37.	<i>N.S.T</i>	29	16	705	326	1076	14
38.	<i>P.W.D (Housing)</i>	68	108	1054	1063	2293	9
39.	<i>P.W.D (Mechanical)</i>	19	68	539	308	934	17
40.	<i>P.W.D (Road & Bridges)</i>	165	242	2766	1963	5136	4
41.	<i>Planning & Co-ordination</i>	26	19	97	32	174	43
42.	<i>Police</i>	259	201	20903	1631	22994	1
43.	<i>Printing & Stationary</i>	13	9	283	30	335	33
44.	<i>Public Health Engineering</i>	78	145	1242	2734	4199	5
45.	<i>Rural Development</i>	133	51	548	261	993	15
46.	<i>S.C.E.R.T</i>	23	21	31	11	86	49
47.	<i>S.I.R.D</i>	10	2	15	13	40	57
48.	<i>School Education</i>	172	276	12965	2117	15530	2
49.	<i>Science & Technology</i>	5		14	5	24	60
50.	<i>Sericulture</i>	15	16	202	120	353	30
51.	<i>Social Security & Welfare</i>	20	79	462	136	697	20
52.	<i>Soil Conservation</i>	60	46	495	223	824	18
53.	<i>Supply</i>	18	5	327	201	551	23
54.	<i>Taxes</i>	12	13	109	83	217	40
55.	<i>Tourism</i>	14	11	56	55	136	32
56.	<i>Town Planning</i>	22	18	119	106	265	37
57.	<i>Transport</i>	7	9	125	42	183	42
58.	<i>Treasury & Accounts</i>	23	23	369	145	560	21
59.	<i>Underdeveloped Areas</i>	13	9	36	42	100	48
60.	<i>Urban Development</i>	12	4	21	14	51	56
61.	<i>Vigilance Commission</i>	16	7	40	18	81	50
62.	<i>Waste Land</i>	10	3	29	28	70	52
63.	<i>Women Development</i>	7	3	40	7	57	55
64.	<i>Youth Resources & Sports</i>	11	21	165	148	345	31
Total		3561	2400	59044	22536	87541	

TABLE-XI (B)
DISTRICT: PHEK

Sl. No.	Department	Class-I	Class-II	Class-III	Class-IV	Total	Rank
1	2	3	4	5	6	7	8
1.	<i>Agriculture</i>	7	10	60	17	94	9
2.	<i>Animal Husbandry & Veterinary</i>	8	1	24	60	93	10
3.	<i>Art & Culture</i>		1	6	3	10	33
4.	<i>Co-operation</i>	1		15	3	19	28
5.	<i>Economics & Statistics</i>		1	18	3	22	25
6.	<i>Election</i>	1	1	5	3	10	33
7.	<i>Electricity</i>	4	9	99	86	198	7
8.	<i>Employment & Craftsman Training</i>	1	3	19	7	30	22
9.	<i>Evaluation</i>		1	5	2	8	35
10.	<i>Excise</i>	1	3	19	6	29	23
11.	<i>Fisheries</i>	1		14	5	20	27
12.	<i>Forest</i>	1	9	74	7	91	11
13.	<i>General Administration</i>	17	5	240	867	1129	3
14.	<i>Health Services</i>	26	7	266	320	619	5
15.	<i>Higher Education</i>	29		11	7	47	15
16.	<i>Home Guards</i>	1	1	8	12	22	25
17.	<i>Horticulture</i>	1	2	8	4	15	31
18.	<i>Industries</i>	2	2	21	17	42	18
19.	<i>Information & Public Relation</i>		2	20	19	41	19
20.	<i>Irrigation & Flood Control</i>	1	3	15	9	28	24
21.	<i>Jail & Prison</i>		1	27	3	31	21
22.	<i>Judicial</i>	3		10	6	19	28
23.	<i>Labour</i>	1	1	6	8	16	30
24.	<i>Land Records & Survey</i>	1		9	11	21	26
25.	<i>Legal Metrology (W & M) & Consumer Protection</i>			4	2	6	36
26.	<i>N.S.T</i>		2	34	14	50	14
27.	<i>P.W.D (Housing)</i>			44	70	114	8
28.	<i>P.W.D (Mechanical)</i>			19	25	44	17
29.	<i>P.W.D (Road & Bridges)</i>	4	7	130	512	653	4
30.	<i>Police</i>	11	8	1542	136	1697	1
31.	<i>Public Health Engineering</i>	4	11	96	332	443	6
32.	<i>Rural Development</i>	10	4	58	22	94	9
33.	<i>School Education</i>	16	5	1072	194	1287	2
34.	<i>Sericulture</i>		2	13	17	32	20
35.	<i>Social Security & Welfare</i>	1	6	37	8	52	13
36.	<i>Soil Conservation</i>	4	6	37	17	64	12
37.	<i>Supply</i>	1		16	11	28	24
38.	<i>Taxes</i>		1	4	4	9	34
39.	<i>Town Planning</i>	1		4	3	8	36
40.	<i>Transport</i>		1	9	4	14	32
41.	<i>Treasury & Accounts</i>	2	1	28	14	45	16
42.	<i>Youth Resources & Sports</i>		2	8	7	17	29
Total		161	119	4154	2877	7311	

TABLE-XI (C)
DISTRICT : MOKOKCHUNG

Sl. No.	Department	Class-I	Class-II	Class-III	Class-IV	Total	Rank
1	2	3	4	5	6	7	8
1.	<i>Agriculture</i>	12	18	119	83	232	9
2.	<i>Animal Husbandry & Veterinary</i>	16	2	71	105	194	11
3.	<i>Art & Culture</i>		1	5	3	9	36
4.	<i>Co-operation</i>	1		18	6	25	31
5.	<i>Economics & Statistics</i>		1	28	6	35	26
6.	<i>Election</i>		1	6	3	10	35
7.	<i>Electricity</i>	13	36	291	217	557	5
8.	<i>Employment & Craftsman Training</i>	1	2	21	10	34	27
9.	<i>Evaluation</i>		1	4	2	7	37
10.	<i>Excise</i>	1	3	27	2	33	28
11.	<i>Fisheries</i>	1	1	17	15	34	27
12.	<i>Forest</i>	2	7	64	14	87	18
13.	<i>General Administration</i>	16	5	198	73	292	8
14.	<i>Health Services</i>	50	11	626	430	1117	3
15.	<i>Higher Technical Education</i>	65		27	65	157	12
16.	<i>Home Guards</i>	1	1	6	80	88	17
17.	<i>Horticulture</i>	2	4	28	61	95	16
18.	<i>Industries</i>	5	2	44	29	80	20
19.	<i>Information & Public Relation</i>		1	42	15	58	23
20.	<i>Irrigation & Flood Control</i>	3	3	85	35	126	14
21.	<i>Jail & Prison</i>	1	1	51	12	65	21
22.	<i>Judicial</i>	3	1	11	9	24	34
23.	<i>Labour</i>	1		8	5	14	34
24.	<i>Land Records & Survey</i>	1		20	11	32	29
25.	<i>Legal Metrology (W & M) & Consumer Protection</i>		1	6	7	14	34
26.	<i>N.S.T</i>	3	1	93	38	135	13
27.	<i>P.W.D (Housing)</i>	5	5	143	235	388	7
28.	<i>P.W.D (Mechanical)</i>	3	21	138	61	223	10
29.	<i>P.W.D (Road & Bridges)</i>	39	57	628	266	990	4
30.	<i>Police</i>	44	29	3658	225	3956	1
31.	<i>Public Health Engineering</i>	8	18	189	224	439	6
32.	<i>Rural Development</i>	12	7	59	28	106	15
33.	<i>School Education</i>	26	59	2300	283	2668	2
34.	<i>Sericulture</i>	1	1	32	12	46	25
35.	<i>Social Security & Welfare</i>	1	7	46	11	65	21
36.	<i>Soil Conservation</i>	4	9	50	18	81	19
37.	<i>Supply</i>	1		27	19	47	24
38.	<i>Taxes</i>	1	3	14	6	24	30
39.	<i>Town Planning</i>	1	3	7	6	17	33
40.	<i>Transport</i>	1		17	5	23	32
41.	<i>Treasury & Accounts</i>	1	3	40	14	58	23
42.	<i>Youth Resources & Sports</i>		3	20	36	59	22
Total		346	330	9283	2785	12744	

TABLE-XI (E)
DISTRICT : ZUNHEBOTO

Sl. No.	Department	Class-I	Class-II	Class-III	Class-IV	Total	Rank
1	2	3	4	5	6	7	
1.	<i>Agriculture</i>	5	4	44	20	73	10
2.	<i>Animal Husbandry & Veterinary</i>	3		57	30	90	9
3.	<i>Art & Culture</i>		1	5	3	9	26
4.	<i>Co-operation</i>		1	13	8	22	21
5.	<i>Economics & Statistics</i>		1	14	3	18	22
6.	<i>Election</i>		2	4	3	9	26
7.	<i>Electricity</i>	3	3	72	52	130	7
8.	<i>Employment & Craftsman Training</i>	1	2	13	8	24	20
9.	<i>Evaluation</i>		1	4	2	7	27
10.	<i>Excise</i>	1	1	19	3	24	20
11.	<i>Fisheries</i>		1	14	2	17	23
12.	<i>Forest</i>	4	4	39	12	59	12
13.	<i>General Administration</i>	16	4	166	52	238	6
14.	<i>Health Services</i>	19		234	288	541	4
15.	<i>Higher Education</i>	23	1	12	10	46	15
16.	<i>Home Guards</i>	1	1	5	2	9	26
17.	<i>Horticulture</i>	2	1	13	17	33	17
18.	<i>Industries</i>	5	1	37	30	73	10
19.	<i>Information & Public Relation</i>		1	23	7	31	18
20.	<i>Irrigation & Flood Control</i>	2	2	17	8	29	19
21.	<i>Jail & Prison</i>			4	13	17	23
22.	<i>Judicial</i>	2	1	7	3	13	24
23.	<i>Land Records & Survey</i>		1	11	12	24	20
24.	<i>Legal Metrology (W & M) & Consumer Protection</i>	1		5	5	11	25
25.	<i>N.S.T</i>	1		41	14	56	13
26.	<i>P.W.D (Road & Bridges)</i>	11	15	345	183	554	3
27.	<i>Police</i>	13	10	1752	112	1887	2
28.	<i>Public Health Engineering</i>	4	14	92	223	333	5
29.	<i>Rural Development</i>	9	3	53	27	92	8
30.	<i>School Education</i>	12	13	1874	166	2065	1
31.	<i>Sericulture</i>	1	1	5	2	9	26
32.	<i>Social Security & Welfare</i>	1	7	43	13	64	11
33.	<i>Soil Conservation</i>	3	2	30	18	53	14
34.	<i>Supply</i>	1		25	15	41	16
35.	<i>Taxes</i>		2	4	5	11	25
36.	<i>Town Planning</i>	1		5	3	9	26
37.	<i>Transport</i>		1	8	2	11	25
38.	<i>Treasury & Accounts</i>	1	3	26	16	46	15
39.	<i>Youth Resources & Sports</i>		2	7	8	17	23
Total		146	107	5142	1400	6795	

TABLE-XI (A)

**DISTRIBUTION OF GOVERNMENT EMPLOYEES ACCORDING TO STATUS, DEPARTMENT
AND DISTRICT AS ON 31ST MARCH, 2009
DISTRICT : KOHIMA.**

Sl.No.	Department	Class-I	Class-II	Class-III	Class-IV	Total	Rank
1	2	3	4	5	6	7	8
1.	<i>Administrative Training Institute</i>	13		26	22	61	43
2.	<i>Agriculture</i>	43	18	126	57	244	17
3.	<i>Animal Husbandry & Veterinary</i>	58	13	187	132	390	13
4.	<i>Art and Culture</i>	13	15	72	51	151	30
5.	<i>Assembly Secretariat</i>	33	15	97	59	204	20
6.	<i>Civil Secretariat</i>	279	101	1260	731	2371	2
7.	<i>Co-operation</i>	14	4	74	20	112	33
8.	<i>Directorate of Technical Education</i>	4	1	16	6	27	54
9.	Directorate of Urban Development	12	4	21	14	51	48
10.	<i>Economics & Statistics</i>	16	28	253	31	328	15
11.	<i>Election</i>	6	5	27	13	51	48
12.	<i>Electricity</i>	39	49	338	231	657	7
13.	<i>Employment & Craftsman Training</i>	15	3	104	46	168	26
14.	<i>Evaluation</i>	7	10	70	25	112	33
15.	<i>Excise</i>	1	3	15	3	22	57
16.	<i>Fire Service</i>	2	6	47	270	325	16
17.	<i>Fisheries</i>	10	4	70	29	113	32
18.	<i>Forest</i>	24	16	139	42	221	19
19.	<i>General Administration</i>	22	19	226	178	445	10
20.	<i>Governor's Secretariat</i>	11	2	22	34	69	41
21.	<i>Health Services</i>	185	19	1052	624	1880	4
22.	<i>Higher Education</i>	157	1	104	107	369	11
23.	<i>Home Guards</i>	6	2	36	11	55	46
24.	<i>Horticulture</i>	16	6	34	43	99	35
25.	<i>Industries</i>	63	19	276	92	450	9
26.	<i>Information & Public Relation</i>	11	9	138	58	216	10
27.	Information Technology	5	2	12	7	26	55
28.	<i>Irrigation & Flood Control</i>	16	6	94	42	158	28
29.	<i>Jail & Prisons</i>	9	5	128	13	155	29
30.	<i>Judicial</i>	5		19	13	37	50
31.	Labour	7		33	12	52	47
32.	Land Record & Survey	1		20	12	33	52
33.	Legal Metrology (W &M) & Consumer Protection	5	1	31	19	56	45
34.	Lotteries	5	3	25	18	51	48
35.	N.B.S.E	31	3	38	14	86	36
36.	N.P.S.C	14	5	26	27	72	39

37.	<i>N.S.T</i>	3	1	138	48	190	22
38.	<i>P.W.D (Housing)</i>	50	80	610	530	1270	5
39.	<i>P.W.D (Mechanical)</i>	14	44	291	134	483	8
40.	<i>P.W.D (Road & Bridges)</i>	50	59	519	368	996	6
41.	<i>Planning & Co-ordination</i>	26	19	97	32	174	25
42.	<i>Police</i>	118	76	4763	400	5357	1
43.	<i>Printing & Stationary</i>	13	9	283	30	335	14
44.	<i>Public Health Engineering</i>	30	32	266	429	757	6
45.	<i>Rural Development</i>	39	6	138	39	222	18
46.	<i>S.C.E.R.T</i>	23	21	31	11	86	36
47.	<i>S.I.R.D</i>	10	2	15	13	40	49
48.	<i>School Education</i>	51	61	1826	298	2236	3
49.	<i>Science & Technology</i>	5		14	5	24	56
50.	<i>Sericulture</i>	9	7	49	14	79	38
51.	<i>Social Security & Welfare</i>	14	15	97	34	160	27
52.	<i>Soil Conservation</i>	34	18	224	93	369	12
53.	<i>Supply</i>	1		21	14	36	51
54.	<i>Taxes</i>	1	1	22	8	32	53
55.	<i>Tourism</i>	14	11	56	55	136	31
56.	<i>Town Planning</i>	14	14	76	77	181	24
57.	<i>Transport</i>	6	3	38	16	63	42
58.	<i>Treasury & Accounts</i>	13	7	138	33	191	21
59.	<i>Underdeveloped Areas</i>	13	9	36	42	100	34
60.	<i>Vigilance Commission</i>	16	7	40	18	81	37
61.	<i>Waste Land</i>	10	3	29	28	70	40
62.	<i>Women Development</i>	7	3	40	7	57	44
63.	<i>Youth Resources & Sports</i>	11	10	101	61	183	23
Total	1753	915	15214	5943	23825		

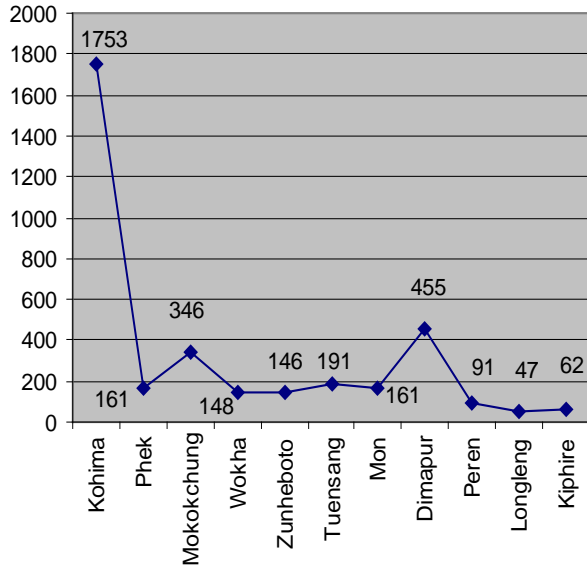
TABLE-XIV

**DISTRIBUTION OF GOVERNMENT EMPLOYEES ACCORDING TO
STATUS AND DISTRICT WISE AS ON 31ST MARCH, 2009**

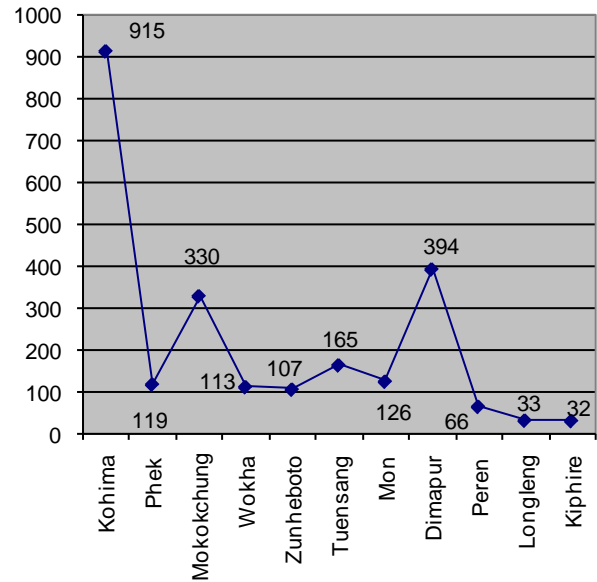
<i>District</i>	STATUS				
	<i>Class-I</i>	<i>Class-II</i>	<i>Class-III</i>	<i>Class-IV</i>	<i>Total</i>
<i>Kohima</i>	1753	915	15214	5943	23825
<i>Phek</i>	161	119	4154	2877	7311
<i>Mokokchung</i>	346	330	9283	2785	12744
<i>Wokha</i>	148	113	2789	1158	4208
<i>Zunheboto</i>	146	107	5142	1400	6795
<i>Tuengsang</i>	191	165	5196	1951	7503
<i>Mon</i>	161	126	3850	1346	5483
<i>Dimapur</i>	455	394	8853	3358	13060
<i>Peren</i>	91	66	2349	660	3166
<i>Longleng</i>	47	33	1322	378	1780
<i>Kiphire</i>	62	32	892	680	1666
Nagaland Total	3561	2400	59044	22536	87541

DISTRIBUTION OF GOVERNMENT EMPLOYEES BY STATUS AND DISTRICT WISE AS ON 31-3-2009

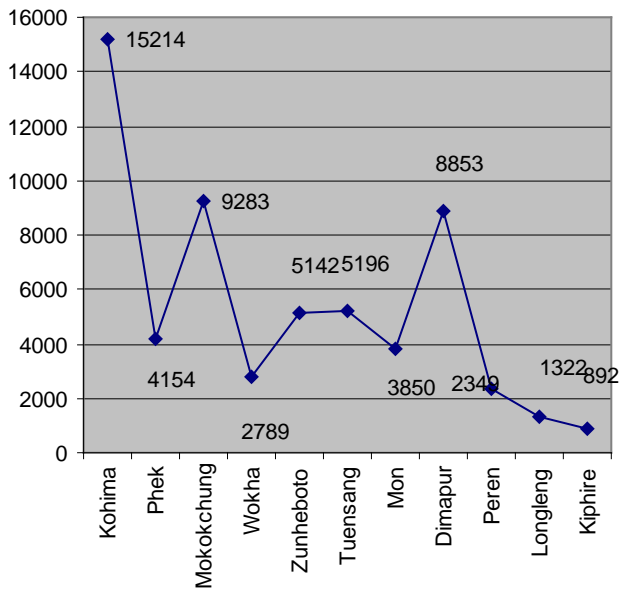
Class-I



Class-II



Class-III



Class-IV

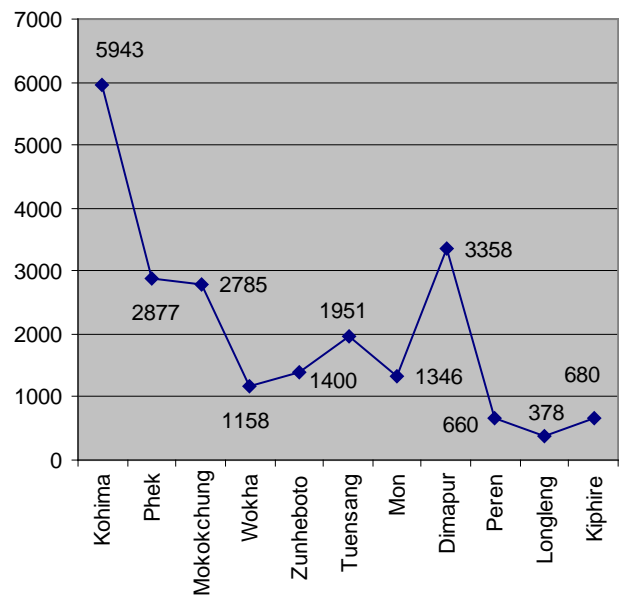


TABLE-XI (K)
DISTRICT : DIMAPUR

Sl. No.	Department	Class-I	Class-II	Class-III	Class-IV	Total	Rank
1	2	3	4	5	6	7	8
1.	Agriculture	21	24	157	65	267	13
2.	Animal Husbandry & Veterinary	40	1	133	152	326	12
3.	Art and Culture		1	1	5	7	42
4.	Co-operation	1	1	23	12	37	33
5.	Economics & Statistics		4	63	5	72	27
6.	Election	1	1	5	3	10	40
7.	Electricity	12	16	200	285	513	5
8.	Employment & Craftsman Training	1	2	24	16	43	32
9.	Evaluation		1	5	2	8	41
10.	Excise	10	11	145	18	184	16
11.	Fisheries		1	32	12	45	31
12.	Forest	12	24	287	71	394	8
13.	General Administration	18	2	108	48	176	17
14.	Geology & Mining	58	27	190	103	378	9
15.	Health Services	41		162	162	365	10
16.	Higher Education	49	1	20	31	101	22
17.	Home Guards	2	3	83	33	121	19
18.	Horticulture	3	4	32	52	91	24
19.	Industries	19	30	209	100	358	11
20.	Information & Public Relation			9	2	11	39
21.	Irrigation & Flood Control	8	13	124	73	218	15
22.	Jail & Prison		1	47	5	53	29
23.	Judicial	9	2	41	26	78	26
24.	Labour	1	1	20	11	33	34
25.	Land Records & Survey	11	5	82	48	146	18
26.	Legal Metrology (W & M) & Consumer Protection	1		14		15	38
27.	N.S.T	19	9	234	137	399	6
28.	P.W.D (Housing)	11	19	193	174	397	7
29.	P.W.D (Mechanical)			55	59	114	20
30.	P.W.D (Road & Bridges)	9	33	314	279	635	3
31.	Police	34	40	4039	359	4472	1
32.	Public Health Engineering	12	26	222	322	582	4
33.	Rural Development	10	5	41	24	80	25
34.	School Education	16	53	1151	454	1674	2
35.	Sericulture	1	1	23	7	32	35
36.	Social Security & Welfare		15	60	29	104	21
37.	Soil Conservation	3	6	31	16	56	28
38.	Supply	10	4	155	78	247	14
39.	Taxes	8	3	44	44	99	23
40.	Town Planning	2	1	10	5	18	37
41.	Transport		1	20	4	25	36
42.	Treasury & Accounts	2	2	36	11	51	30
43.	Youth Resources & Sports			9	16	25	36
Total		455	394	8853	3358	13060	

TABLE-XI (I)
DISTRICT : LONGLENG

Sl. No.	Department	Class-I	Class-II	Class-III	Class-IV	Total	Rank
1	2	3	4	5	6	7	8
1.	<i>Agriculture</i>	1	2	20	5	28	8
2.	<i>Animal Husbandry & Veterinary</i>	2		10	6	18	12
3.	<i>Economics & Statistics</i>		1	3	2	6	17
4.	<i>Election</i>		2	4	4	10	15
5.	<i>General Administration</i>	6		92	52	150	4
6.	<i>Health Services</i>	5		67	104	176	3
7.	<i>Higher Education</i>	16		6	8	30	7
8.	<i>Horticulture</i>	1	1	7	3	12	14
9.	<i>Industries</i>	1		12	16	29	6
10.	<i>Irrigation & Flood Control</i>	1	2	10	12	25	9
11.	<i>P.W.D (Road & Bridges)</i>	3	3	50	10	66	5
12.	<i>Police</i>	2	1	187	14	204	2
13.	<i>Rural Development</i>	5	1	25	13	44	6
14.	<i>School Education</i>	3	14	783	101	901	1
15.	<i>Sericulture</i>		1	10	13	24	10
16.	<i>Social Security & Welfare</i>		2	13	3	18	12
17.	<i>Soil & Water Conservation</i>	1	2	11	5	19	11
18.	<i>Treasury & Accounts</i>		1	8	4	13	13
19.	<i>I.P.R</i>			4	3	7	16
Total		47	33	1322	378	1780	

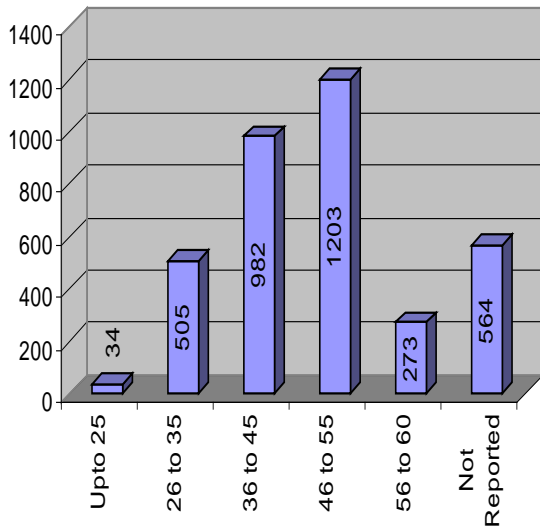
TABLE – IX

**DISTRIBUTION OF GOVERNMENT EMPLOYEES ACCORDING TO STATUS AND AGE
AS ON 31ST MARCH, 2009**

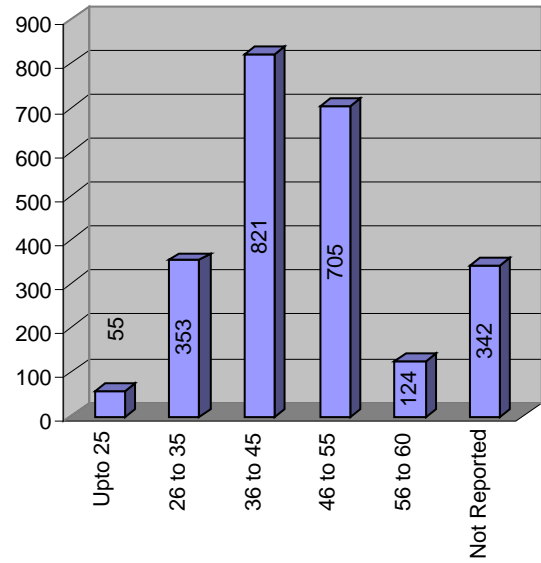
<i>Age Group</i>	STATUS									
	<i>Class-I</i>		<i>Class-II</i>		<i>Class-III</i>		<i>Class-IV</i>		<i>Total</i>	
	<i>Number</i>	<i>P.C</i>	<i>Number</i>	<i>P.C</i>	<i>Number</i>	<i>P.C</i>	<i>Number</i>	<i>P.C</i>	<i>Number</i>	<i>P.C</i>
1	2	3	4	5	6	7	8	9	10	11
<i>Upto 25</i>	34	0.95	55	2.29	6227	10.55	2173	9.64	8489	9.70
<i>26 to 35</i>	505	14.18	353	14.71	17335	29.36	6737	29.89	24930	28.48
<i>36 to 45</i>	982	27.58	821	34.21	17812	30.17	6035	26.78	25650	29.30
<i>46 to 55</i>	1203	33.78	705	29.37	9583	16.23	2938	13.04	14429	16.48
<i>56 to 60</i>	273	7.67	124	5.17	1185	2.00	317	1.41	1899	2.17
<i>Not Reported</i>	564	15.84	342	14.25	6902	11.69	4336	19.24	12144	13.87
Total	3561	100.00	2400	100.00	59044	100.00	22536	100.00	87541	100.00

DISTRIBUTION OF GOVERNMENT EMPLOYEES BY STATUS AND AGE AS ON 31-3-2009

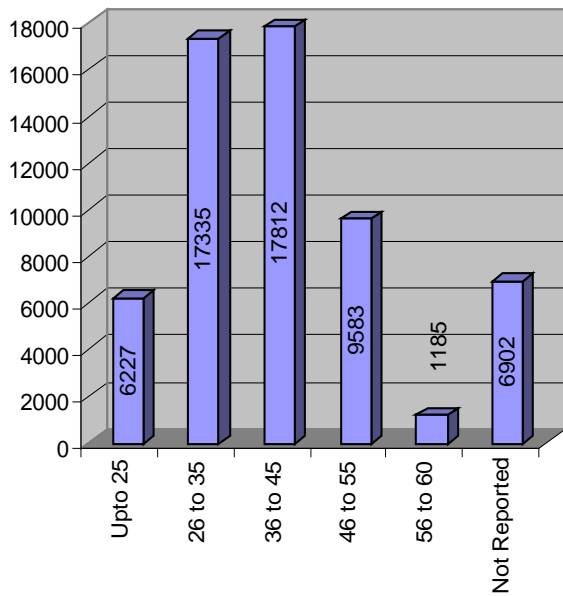
Class-I



Class-II



Class-III



Class-IV

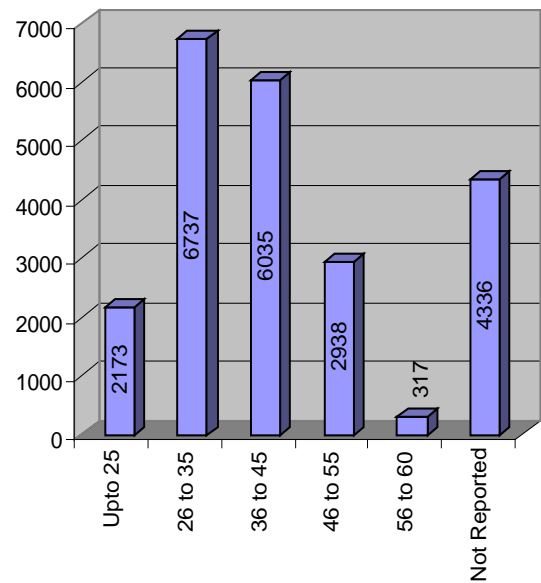


TABLE-XII**DISTRIBUTION OF GOVERNMENT EMPLOYEES BY STATUS AND EDUCATIONAL QUALIFICATION
AS ON 31ST MARCH, 2009**

<i>Educational Qualification</i>	STATUS									
	<i>Class-I</i>		<i>Class-II</i>		<i>Class-III</i>		<i>Class-IV</i>		<i>Total</i>	
	<i>Number</i>	<i>P.C</i>	<i>Number</i>	<i>P.C</i>	<i>Number</i>	<i>P.C</i>	<i>Number</i>	<i>P.C</i>	<i>Number</i>	<i>P.C</i>
1	2	3	4	5	6	7	8	9	10	11
<i>Post Graduate</i>	1166	50.85	288	12.56	829	36.15	10	0.44	2293	100.00
<i>Graduate</i>	1327	13.26	794	7.93	7777	77.69	112	1.12	10010	100.00
<i>P.U/Intermediate</i>	860	8.74	685	6.97	7949	80.84	339	3.45	9833	100.00
<i>Matriculate</i>	173	1.07	477	2.96	12953	80.35	2518	15.62	16121	100.00
<i>Under Matric</i>	35	0.07	156	0.33	29536	62.02	17795	37.58	47522	100.00
<i>Illiterate</i>							1762	100	1762	100.00
Total	3561	4.07	2400	2.74	50944	67.45	22536	25.74	87541	100.00

TABLE-XI (G)
DISTRICT : MON

Sl. No.	Department	Class-I	Class-II	Class-III	Class-IV	Total	Rank
1	2	3	4	5	6	7	8
1.	<i>Agriculture</i>	6	8	72	25	111	8
2.	<i>Animal Husbandry & Veterinary</i>	10		19	48	77	12
3.	<i>Art & Culture</i>		1	5	3	9	33
4.	<i>Co-operation</i>	1		9	3	13	31
5.	<i>Economics & Statistics</i>		1	16	3	20	28
6.	<i>Election</i>	1	1	5	2	9	33
7.	<i>Electricity</i>	3	5	72	74	154	7
8.	<i>Employment & Craftsman Training</i>	2	1	21	7	31	22
9.	<i>Evaluation</i>		1	4	3	8	34
10.	<i>Excise</i>	1	3	25	2	31	22
11.	<i>Fisheries</i>		2	13	11	26	24
12.	<i>Forest</i>	1	6	79	8	94	9
13.	<i>General Administration</i>	16	5	159	72	252	6
14.	<i>Health Services</i>	22	3	189	214	428	3
15.	<i>Higher Education</i>	24		10	12	46	17
16.	<i>Home Guards</i>	1	1	16	4	22	26
17.	<i>Horticulture</i>	1	1	12	11	25	25
18.	<i>Industries</i>	5	2	23	13	43	18
19.	<i>Information & Public Relation</i>		1	29	20	50	16
20.	<i>Irrigation & Flood Control</i>	3	4	37	18	62	14
21.	<i>Jail & Prison</i>		1	21	5	27	23
22.	<i>Judicial</i>	2	1	10	6	19	29
23.	<i>Labour</i>		1	5	5	11	32
24.	<i>Land Records & Survey</i>		1	9	10	20	28
25.	<i>N.S.T</i>	2	2	53	23	80	11
26.	<i>P.W.D (Road & Bridges)</i>	15	15	201	81	312	5
27.	<i>Police</i>	9	11	1520	84	1624	1
28.	<i>Public Health Engineering</i>	4	7	107	302	420	4
29.	<i>Rural Development</i>	11	10	38	28	87	10
30.	<i>School Education</i>	12	16	891	142	1061	2
31.	<i>Sericulture</i>		1	15	16	32	21
32.	<i>Social Security & Welfare</i>	1	6	42	11	60	15
33.	<i>Soil Conservation</i>	3	2	24	15	42	19
34.	<i>Supply</i>	1		24	15	40	20
35.	<i>Taxes</i>	1	1	6	5	13	31
36.	<i>Town Planning</i>	1		5	3	9	33
37.	<i>Transport</i>		1	12	3	16	30
38.	<i>Treasury & Accounts</i>	1	2	38	29	70	13
39.	<i>Weight & Measures</i>	1		4	3	8	34
40.	<i>Youth Resources & Sports</i>		2	10	9	21	27
Total		161	126	3850	1346	5483	

TABLE-XI (J)
DISTRICT : PEREN

Sl. No.	Department	Class-I	Class-II	Class-III	Class-IV	Total	Rank
1	2	3	4	5	6	7	8
1.	<i>Agriculture</i>	3	1	18	9	31	10
2.	<i>Animal Husbandry & Veterinary</i>	3	1	20	28	52	8
3.	<i>Co-operation</i>		1	2	2	5	20
4.	<i>Economics & Statistics</i>		1	2	1	4	21
5.	<i>Election</i>	1	1	5	3	10	18
6.	<i>Electricity</i>	1	5	32	48	86	7
7.	<i>Employment & Craftsman Training</i>		1	2	2	5	20
8.	<i>Fisheries</i>		1	10	1	12	16
9.	<i>Forest</i>	3	7	68	8	86	7
10.	<i>General Administration</i>	8	1	93	36	138	5
11.	<i>Health Services</i>	14	1	112	102	229	3
12.	<i>Higher Education</i>	19		6	6	31	10
13.	<i>Horticulture</i>	1	1	7	2	11	17
14.	<i>I.P.R</i>		1	5	2	8	19
15.	<i>Industries</i>	1		12	18	31	10
16.	<i>Irrigation & Flood Control</i>	1		15	4	20	12
17.	<i>Jail & Prison</i>		1	26	4	31	10
18.	<i>P.H.E.D</i>	4	7	32	83	126	6
19.	<i>P.W.D (Road & Bridges)</i>	5	14	102	46	167	4
20.	<i>Police</i>	11	11	1165	145	1332	1
21.	<i>Rural Development</i>	5	1	17	11	34	9
22.	<i>School Education</i>	8	6	549	83	646	2
23.	<i>Sericulture</i>	1		11	6	18	13
24.	<i>Social Security & Welfare</i>		3	19	4	26	11
25.	<i>Supply</i>	1		11	6	18	13
26.	<i>Treasury & Accounts</i>	1		8	4	13	15
Total		91	66	2349	660	3166	

TABLE-XI (F)
DISTRICT: TUENGSANG

Sl. No.	Department	Class-I	Class-II	Class-III	Class-IV	Total	Rank
1	2	3	4	5	6	7	8
1.	<i>Agriculture</i>	5	9	68	40	122	10
2.	<i>Animal Husbandry & Veterinary</i>	11	1	42	69	123	9
3.	<i>Art & Culture</i>		1	12	6	19	28
4.	<i>Co-operation</i>	1		13	7	21	27
5.	<i>Economics & Statistics</i>		1	25	7	33	24
6.	<i>Election</i>	1	1	5	3	10	32
7.	<i>Electricity</i>	5	9	231	186	431	5
8.	<i>Employment & Craftsman Training</i>	1	3	21	10	35	24
9.	<i>Evaluation</i>		1	5	2	8	34
10.	<i>Excise</i>		5	43	3	51	21
11.	<i>Fisheries</i>	1	1	18	9	29	25
12.	<i>Forest</i>	1	6	60	9	76	14
13.	<i>General Administration</i>	17	3	273	131	424	6
14.	<i>Health Services</i>	27	9	396	309	741	3
15.	<i>Higher Education</i>	34	1	9	16	60	17
16.	<i>Home Guards</i>	1	1	4	3	9	33
17.	<i>Horticulture</i>	1	1	12	30	44	22
18.	<i>Industries</i>	5	4	31	19	59	18
19.	<i>Information & Public Relation</i>		1	34	16	51	21
20.	<i>Irrigation & Flood Control</i>	2	1	24	15	42	23
21.	<i>Jail & Prison</i>		2	10	44	56	19
22.	<i>Judicial</i>	3		12	8	23	26
23.	<i>Labour</i>		1	4	3	8	34
24.	<i>Land Records & Survey</i>		1	19	11	31	25
25.	<i>Legal Metrology (W & M) & Consumer Protection</i>	1		4	5	10	32
26.	<i>N.S.T</i>	1		84	27	112	12
27.	<i>P.W.D (Housing)</i>	2	4	64	54	124	8
28.	<i>P.W.D (Mechanical)</i>	2	3	36	29	70	16
29.	<i>P.W.D (Road & Bridges)</i>	11	9	187	105	312	7
30.	<i>Police</i>	11	11	1556	118	1696	2
31.	<i>Public Health Engineering</i>	4	12	114	325	455	4
32.	<i>Rural Development</i>	17	6	67	26	116	11
33.	<i>School Education</i>	17	41	1525	192	1775	1
34.	<i>Sericulture</i>		1	17	17	35	24
35.	<i>Social Security & Welfare</i>	1	9	52	11	73	15
36.	<i>Soil Conservation</i>	5	1	52	31	89	13
37.	<i>Supply</i>	1		23	29	53	20
38.	<i>Taxes</i>		2	8	7	17	29
39.	<i>Town Planning</i>	1		7	5	13	31
40.	<i>Transport</i>		1	10	4	15	30
41.	<i>Treasury & Accounts</i>	1	1	15	6	23	26
42.	<i>Youth Resources & Sports</i>		1	4	4	9	33
Total		191	165	5196	1951	7503	

TABLE-XI (D)
DISTRICT: WOKHA

Sl. No.	Department	Class-I	Class-II	Class-III	Class-IV	Total	Rank
1	2	3	4	5	6	7	8
1.	Agriculture	7	11	73	38	129	7
2.	Animal Husbandry & Veterinary	7	1	51	52	111	8
3.	Art & Culture		1	5	3	9	31
4.	Co-operation	1		13	4	18	25
5.	Economics & Statistics		1	19	2	22	23
6.	Election	1	1	5	3	10	30
7.	Electricity	3	9	49	36	97	9
8.	Employment & Craftsman Training	1	2	21	9	33	18
9.	Evaluation		1	5	1	7	32
10.	Excise	1	1	15	4	21	24
11.	Fisheries		2	13	7	22	23
12.	Forest	3	4	54	10	71	11
13.	General Administration	16	3	260	101	380	4
14.	Health Services	25	2	187	168	382	3
15.	Higher Education	22		11	21	54	13
16.	Home Guards	1	1	5	3	10	30
17.	Horticulture	1	2	18	31	52	14
18.	Industries	4	5	29	26	64	12
19.	Information & Public Relation	1	1	22	10	34	17
20.	Irrigation & Flood Control	2	1	19	8	30	20
21.	Jail & Prison			29	2	31	19
22.	Judicial	3		9	5	17	26
23.	Labour		1	4	2	7	32
24.	Land Records & Survey	1		18	10	29	21
25.	Legal Metrology (W & M) & Consumer Protection	1		6	5	12	29
26.	N.S.T		1	28	25	54	13
27.	P.W.D (Road & Bridges)	13	25	215	91	344	5
28.	Police	4	4	470	24	502	2
29.	Public Health Engineering	4	9	66	199	278	6
30.	Rural Development	10	7	32	31	80	10
31.	School Education	7	6	882	169	1064	1
32.	Sericulture	1	1	14	4	20	24
33.	Social Security & Welfare	1	6	35	9	51	15
34.	Soil Conservation	3		36	12	51	15
35.	Supply	1		17	5	23	22
36.	Taxes	1		7	4	12	29
37.	Town Planning	1		5	4	10	30
38.	Transport		1	11	4	16	27
39.	Treasury & Accounts	1	2	25	9	37	16
40.	Youth Resources & Sports		1	6	7	14	28
Total		148	113	2789	1158	4208	

TABLE-XIII

**DISTRIBUTION OF GOVERNMENT EMPLOYEES BY STATUS AND PLAN / NON-PLAN POST
AS ON 31ST MARCH, 2009**

Status	Plan Post		Non-Plan Post		Total	
	Number	P.C	Number	P.C	Number	P.C
1	2	3	4	5	6	7
<i>Class-I</i>	374	10.5	3187	89.5	3561	100.00
<i>Class-II</i>	242	10.08	2158	89.92	2400	100.00
<i>Class-III</i>	8308	14.07	50736	85.93	59044	100.00
<i>Class-IV</i>	2197	9.75	20339	90.25	22536	100.00
Total	11121	12.7	76420	87.3	87541	100.00

TABLE-VIII

**DISTRIBUTION OF GOVERNMENT EMPLOYEES ACCORDING TO
STATUS AND NAGA / NON-NAGA**

AS ON 31ST MARCH, 2009

Status	Naga		Non-Naga		Total	
	Number	P.C	Number	P.C	Number	P.C
1	2	3	4	5	6	7
Class-I	3278	92.05	283	7.95	3561	100
Class-II	2234	93.08	166	6.92	2400	100
Class-III	55426	93.87	3618	6.13	59044	100
Class-IV	20112	89.24	2424	10.76	22536	100
Total	81050	92.59	6491	7.41	87541	100

DISTRIBUTION OF GOVERNMENT EMPLOYEES, ACCORDING TO STATUS AND NAGA / NON-NAGA AS ON 31-3-2009

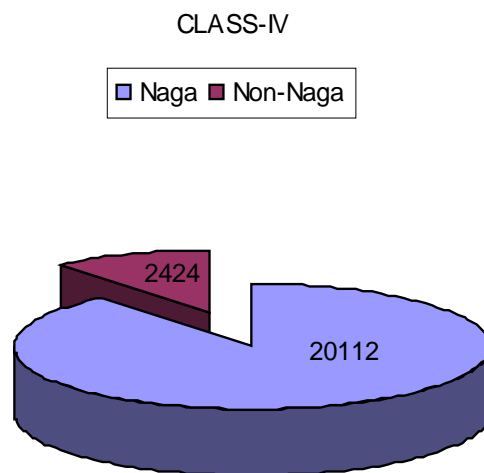
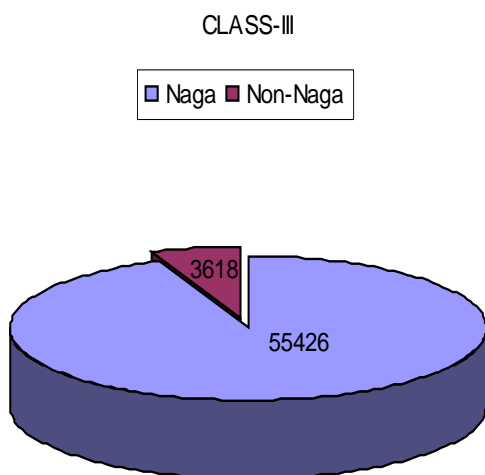
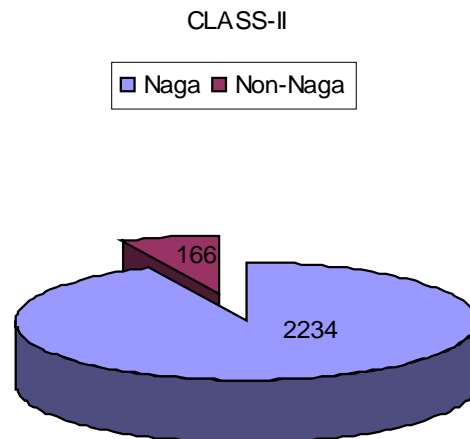
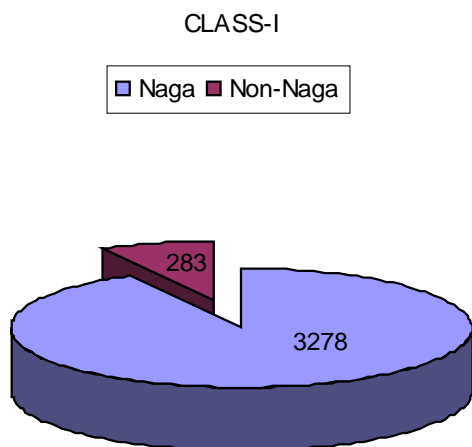


TABLE-IV**DISTRIBUTION OF GOVERNMENT EMPLOYEES ACCORDING TO STATUS AND RELIGION****AS ON 31ST MARCH, 2009**

<i>Status</i>	RELIGION									
	<i>Christian</i>		<i>Hindu</i>		<i>Muslim</i>		<i>Others</i>		<i>Total</i>	
	<i>Number</i>	<i>P.C</i>	<i>Number</i>	<i>P.C</i>	<i>Number</i>	<i>P.C</i>	<i>Number</i>	<i>P.C</i>	<i>Number</i>	<i>P.C</i>
1	2	3	4	5	6	7	8	9	10	11
<i>Class-I</i>	3302	92.73	237	6.65	7	0.20	15	0.42	3561	100.00
<i>Class-II</i>	2255	93.96	132	5.5	2	0.08	11	0.46	2400	100.00
<i>Class-III</i>	55485	93.97	3237	5.48	67	0.11	255	0.44	59044	100.00
<i>Class-IV</i>	20133	89.34	2002	8.88	38	0.17	363	1.61	22536	100.00
Total	81175	92.73	5608	6.41	114	0.13	644	0.73	87541	100.00

TABLE-III

**DISTRIBUTION OF GOVERNMENT EMPLOYEES ACCORDING
TO STATUS AND SEX AS ON 31ST MARCH, 2009**

	SEX			
		<i>Male</i>	<i>Female</i>	<i>Total</i>
1	2	3	4	5
<i>Class-I</i>	N.O	2873	688	3561
	P.C	80.68	19.32	100.00
<i>Class-II</i>	N.O	1976	424	2400
	P.C	82.33	17.67	100.00
<i>Class-III</i>	N.O	459.59	13085	590.44
	P.C	77.84	22.16	100.00
<i>Class-IV</i>	N.O	18596	3940	22536
	P.C	82.52	17.48	100.00
Total	N.O	69404	18137	87541
	P.C	79.28	20.72	100.00

TABLE-V

DISTRIBUTION OF GOVERNMENT EMPLOYEES ACCORDING TO STATUS AND TRIBE AS ON 31ST MARCH, 2009

Status	Schedule Tribe		Others		Total	
	Number	P.C	Number	P.C	Number	P.C
1	2	3	4	5	6	7
Class-I	3290	92.39	271	7.61	3561	100.00
Class-II	2235	93.12	165	6.88	2400	100.00
Class-III	55415	93.85	3629	6.15	59044	100.00
Class-IV	20175	89.52	2361	10.48	22536	100.00
Total	81115	92.66	6426	7.34	87541	100.00

TABLE-VII

**DISTRIBUTION OF GOVERNMENT EMPLOYEES ACCORDING TO MONTHLY EMOLUMENT RANGES
(BASIC PAY RANGES PLUS ALL OTHER ALLOWANCES) AS ON 31ST MARCH, 2009**

<i>Basic Pay Ranges (Rs.)</i>	STATUS									
	<i>Class-I</i>		<i>Class-II</i>		<i>Class-III</i>		<i>Class-IV</i>		<i>Total</i>	
	<i>Number</i>	<i>P.C</i>	<i>Number</i>	<i>P.C</i>	<i>Number</i>	<i>P.C</i>	<i>Number</i>	<i>P.C</i>	<i>Number</i>	<i>P.C</i>
1	2	3	4	5	6	7	8	9	10	11
<i>Below 2550</i>					488	0.83	3734	16.57	4222	4.82
<i>2551-2999</i>					49	0.08	680	3.02	729	0.83
<i>3000-3499</i>					297	0.50	1169	5.19	1466	1.67
<i>3500-4999</i>			2	0.08	1445	2.45	4267	18.93	5714	6.53
<i>5000-6999</i>	1	0.03	3	0.13	10200	17.28	7015	31.13	17219	19.67
<i>7000-8499</i>	35	0.98	25	1.04	15994	27.09	3615	16.04	19669	22.47
<i>8500-9999</i>	4	0.11	113	4.71	14195	24.04	1439	6.38	15751	17.99
<i>10,000-11,999</i>	31	0.87	274	11.42	10015	16.96	574	2.55	10894	12.44
<i>12,000-14,999</i>	219	6.15	729	30.37	4977	8.43	42	0.19	5967	6.82
<i>15,000-17,999</i>	451	12.67	763	31.79	1180	1.99	1		2395	2.74
<i>18,000-20899</i>	577	16.20	377	15.17	155	0.27			1109	1.27
<i>20,900 and above</i>	2243	62.99	114	4.75	49	0.08			2406	2.75
Total	3561	100.00	2400	100.00	59044	100.00	22536	100.00	87541	100.00

TABLE-I

DISTRIBUTION OF GOVERNMENT EMPLOYEES ACCORDING TO STATUS AND TENURE OF SERVICE AS ON 31ST MARCH, 2009

Status	TENURE OF SERVICE					
		Permanent	Temporary & Deputation	Contract & Adhoc	Work Charge	Total
1	2	3	4	5	6	7
Class-I	N.O	1997	1424	123	17	3561
	P.C	56.08	39.99	3.45	0.48	100
Class-II	N.O	963	1274	78	85	2400
	P.C	40.12	53.08	3.25	3.55	100
Class-III	N.O	26599	27637	1605	3203	59044
	P.C	45.05	46.81	2.72	5.42	100
Class-IV	N.O	4583	11272	517	6164	22536
	P.C	20.34	50.02	2.29	27.35	100
Total	N.O	34142	41607	2323	9469	87541
	P.C	39	47.53	2.65	10.82	100

TABLE-II (A)
DISTRIBUTION OF GOVERNMENT EMPLOYEES ACCORDING TO
STATUS AND NUMBERS FROM 1964-1971

<i>years</i>	<i>Class-I & II</i>	<i>Class-III</i>	<i>Class-IV</i>	<i>Total</i>
1964	287	5395	2629	8311
1965	360	6674	4272	11306
1966	449	7465	5057	12971
1967	475	8105	6866	15446
1968	572	9372	8655	18599
1969	634	10993	10300	21927
1970	682	11223	11341	23246
1971	704	12116	13414	26234

TABLE-II (B)
DISTRIBUTION OF GOVERNMENT EMPLOYEES ACCORDING TO
STATUS AND NUMBERS FROM 1986-2009

<i>Years</i>	<i>Class-I</i>	<i>Class-II</i>	<i>Class-III</i>	<i>Class-IV</i>	<i>Total</i>
1986	955	1183	26613	22151	50902
1987	1110	1128	27395	22769	52402
1988	1381	1021	27904	23221	53527
1989	1538	969	28634	24434	55575
1990	1763	818	29447	24815	56843
1991	1883	773	30185	25108	57949
1992	1941	777	30779	25417	58914
1993	1977	779	31061	25650	59467
1994	2109	729	31435	26049	60322
1995	2341	851	32485	26535	62212
1996	2410	1000	33621	27413	64444
1997	2591	916	33399	27611	64517
1998	2948	1502	38598	27840	70888
1999	3028	1540	39892	28169	72629
2000	3058	1545	42318	26452	73373
2001	3059	1589	42440	26360	73448
2002	3059	1698	50968	17751	73476
2003	3064	1697	50988	17734	73483
2004	3109	1883	52007	17341	74340
2005	3162	1929	54723	17838	77652
2006	3363	1976	56888	20107	82334
2007	3426	2120	56305	21547	83398
2008	3558	2371	58002	22604	86535
2009	3561	2400	59044	22536	87541

TABLE-VI**DISTRIBUTION OF GOVERNMENT EMPLOYEES ACCORDING TO STATUS AND BASIC PAY RANGES****AS ON 31ST MARCH, 2009**

<i>Basic Pay Ranges (Rs.)</i>	STATUS									
	<i>Class-I</i>		<i>Class-II</i>		<i>Class-III</i>		<i>Class-IV</i>		<i>Total</i>	
	<i>Number</i>	<i>P.C</i>	<i>Number</i>	<i>P.C</i>	<i>Number</i>	<i>P.C</i>	<i>Number</i>	<i>P.C</i>	<i>Number</i>	<i>P.C</i>
1	2	3	4	5	6	7	8	9	10	11
<i>Below 2550</i>	3	0.08	6	0.25	3366	5.70	6744	29.93	10119	11.56
<i>2551-2999</i>	4	0.11	4	0.17	5365	9.09	4702	20.86	10075	11.51
<i>3000-3499</i>	2	0.06	4	0.17	9655	16.35	5406	23.99	15067	17.21
<i>3500-4999</i>	6	0.17	26	1.08	22845	38.69	5162	22.91	28039	32.03
<i>5000-6999</i>	9	0.25	818	34.08	14175	24.01	475	2.11	15477	17.68
<i>7000-8499</i>	305	8.57	895	37.29	3183	5.39	43	0.19	4426	5.06
<i>8500-9999</i>	968	27.18	495	20.62	393	0.66			1856	2.12
<i>10,000-11,999</i>	1130	31.74	117	4.88	52	0.09	3	0.01	1302	1.49
<i>12,000-14,999</i>	681	19.12	28	1.17	10	0.02	1		720	0.82
<i>15,000-17,999</i>	330	9.27	7	0.29					337	0.38
<i>18,000-20899</i>	103	2.89							103	0.12
<i>20,900 and above</i>	20	0.56							20	0.02
Total	3561	100.00		100.00	59044	100.00		100.00	87541	100.00

GROWTH RATE OF EMPLOYEMENT DURING 1964-2009

